

# FEIYU SLIDING BEARINGS

嘉善飞瑜滑动轴承厂  
JIASHAN FEIYU SLIDING BEARING FACTORY



 FEIYU  
BEARING



## 公司简介 INTRODUCTION

嘉善飞瑜滑动轴承厂是专业生产制造自润滑轴承的企业。高标准的生产各类自润滑复合材料轴承产品，主要有：FYB500镶嵌式固体润滑轴承、FYB010(DU)自润滑轴承、FYB01F自润滑翻边轴承、FYB020(DX)便捷润滑轴承、FYB800双金属轴承、FYB090青铜轴承等。

本公司产品平直稳定、可靠，深受客户的好评和推崇，并多次或得有关部门的奖杯和证书。产品广泛应用于液压元件、汽车、冶金矿山、船舶海洋、工业机械、石油工业机械、纺织机械、起重设备、印刷、食品、建筑机械等各个领域。

公司以客户为中心，信誉为本，坚持以质量第一，用户至上为宗旨，竭诚为新老客户服务。

Jiashan YUFEI Bearing Factory is specialized in manufacturing self-lubricating bearings. Produce various kinds of high standard self-lubricating composite bearing products, mainly: FYB500 inlaid solid lubricating bearings, FYB010 self-lubricating bearings, FYB01F flanging self-lubricating bearings, FYB020 convenient lubrication bearings, FYB800 bimetal bearing, FYB090 bronze bearings, FYB030 steel ball retainers, FYB040 PTFE soft belt enhancements, FYB070 copper PTFE tape, FYB100 oil-bearing copper and so on.

Our products are flat stable, reliable, well received by customers and respected, and many times or get a trophy and certificate authorities. Our products are widely used in hydraulic components, automobile, metallurgy, mining, shipbuilding marine, industrial machinery, oil industry machinery, textile machinery, lifting equipment, printing, food, construction machinery and other fields.

Customer-centric company, reputation oriented, adhere to the quality first, customer first for the purpose and dedication to new and old customers.

### 基材特性 Material Features

FYB500固体润滑轴承是在轴承基体的金属摩擦面上开出大小适当、排列有序的孔穴，然后在孔穴中嵌入具有独特自润滑性能的成型固体润滑剂（固体润滑剂面积一般为摩擦面积的25%–35%）而制成的自润滑轴承。该轴承综合了金属基体和特殊配方润滑材料的各自优点，突破了一般轴承依靠油膜润滑的局限性。JDB固体润滑轴承特别适用于无油、高温、高负载、低速度、防污、防蚀、防辐射、以及在水中或真空溶液浸润而根本无法加润滑油膜的特殊工况条件下使用。该产品广泛应用于冶金轧钢设备、灌装设备、水轮机、气轮机、仪器仪表以及矿山机械、船舶机械、纺织机械、船舶工业、航天航海等领域。同时也越来越广泛的使用在其它工农业机械中。FYB500固体润滑轴承的基体应根据轴承自身的工况条件而定。比较常用的材料有高力黄铜、锡青铜、铸件等。根据轴承自身工况条件，通过不同金属基体和嵌入固体润滑剂的组合，可保证产品能满足各种温度、负荷、运动和介质等工况条件下的特殊需要，同时保证稳定可靠地工作。



FYB500 material is made of strong cast bronze based metal with special solid lubricants embedded. The base metal withstands high load and the solid lubricants provide for self-lubrication. The bearing shows excellent performance without pre-lubrication under conditions of extreme high/lower temperature with low speed.

This material provides a maintenance-free bearing solution, particularly for high load, intermittent or oscillating motion.

This kind of bearing can be applied under dry, high temperature, high pressure, corrosive, water or other chemical environments when no oil can be introduced.

Now is widely used in automotive products line, water engineering, dam gate, plastic industries, successive casting machines, steel rollers in metallurgy industry, mineral machines, ships, turbo generators, hydraulic turbines and injection molding machines...

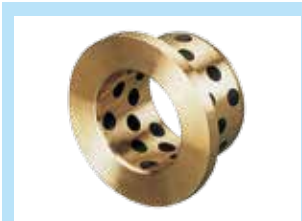
### 主要技术指标 Main Technical Index

型号	Type	FYB501	FYB502	FYB503	FYB504	FYB505
基本材质	Base Material	CuZn25Al6Mn4	CuSn6Zn6Pb3	钢 CuSn6Zn6Pb3	HT-250	Gcr15
基本硬度	Base Hardness	HB210~250 (HB270)	HB80~120	HB60~90	HB180~230	HRC55~60
摩擦系数	Friction Coef. ( $\mu$ )	< 0.16	< 0.15	< 0.14	< 0.17	< 0.17
最高使用温度	Temp Limit	300°C	350°C	300°C	400°C	350°C
极限载荷	Dynamic Load Limit	100N/mm <sup>2</sup>	60N/mm <sup>2</sup>	70N/mm <sup>2</sup>	60N/mm <sup>2</sup>	250N/mm <sup>2</sup>
1m/mm的 极限载荷	Load Limit Under 1m/mm	25N/mm <sup>2</sup>	15N/mm <sup>2</sup>	20N/mm <sup>2</sup>	15N/mm <sup>2</sup>	70N/mm <sup>2</sup>
最高滑动速度	Sliding Velocity Limit	干0.4m/s 油5m/s	2m/s	2m/s	0.5m/s	0.1m/s
允许极限PV值	PV Limit	3.8N/mm <sup>2</sup> · m/s	0.5N/mm <sup>2</sup> · m/s	0.6N/mm <sup>2</sup> · m/s	0.8N/mm <sup>2</sup> · m/s	2.5N/mm <sup>2</sup> · m/s

产品介绍  
Product Introduction



FYB500A



FYB500B



FYB500C



FYB500D



FYB500E



FYB500F



FYB500G



FYB500H



FYB500I



FYB500J



FYB500K



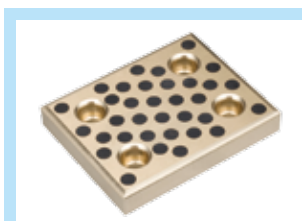
FYB500L



FYB500M



FYB500N



FYB500O



FYB500P



FYB500Q



FYB500R



FYB500S



FYB500T



FYB500U



FYB500V



FYB090



FYB090F



FYB092



FYB092F



FYB09G



FYB800



FYB801



FYB802



FYB803



FYB800F



FYB80G



FYB010



FYB01T



FYB01B



FYB01D



FYB01P



FYB01W



FYB01S



FYB01F



FYB01WC



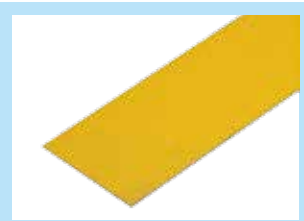
FYB01SP



FYB020



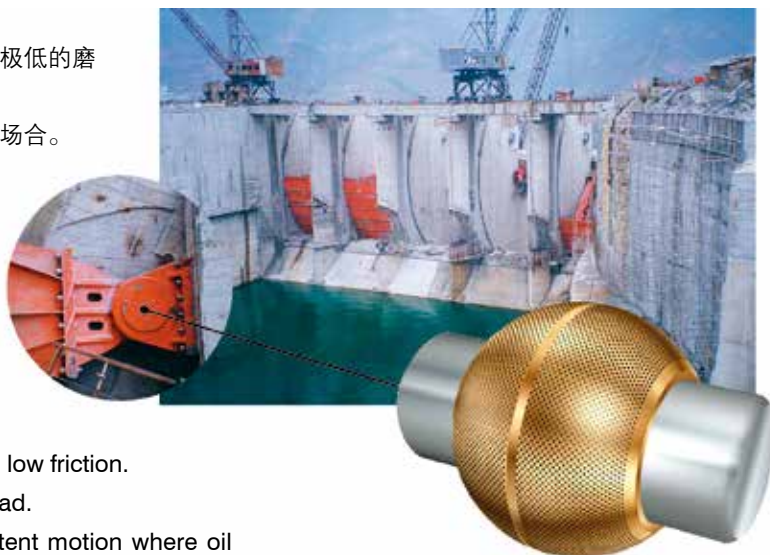
FYB2WC



FYB02SP

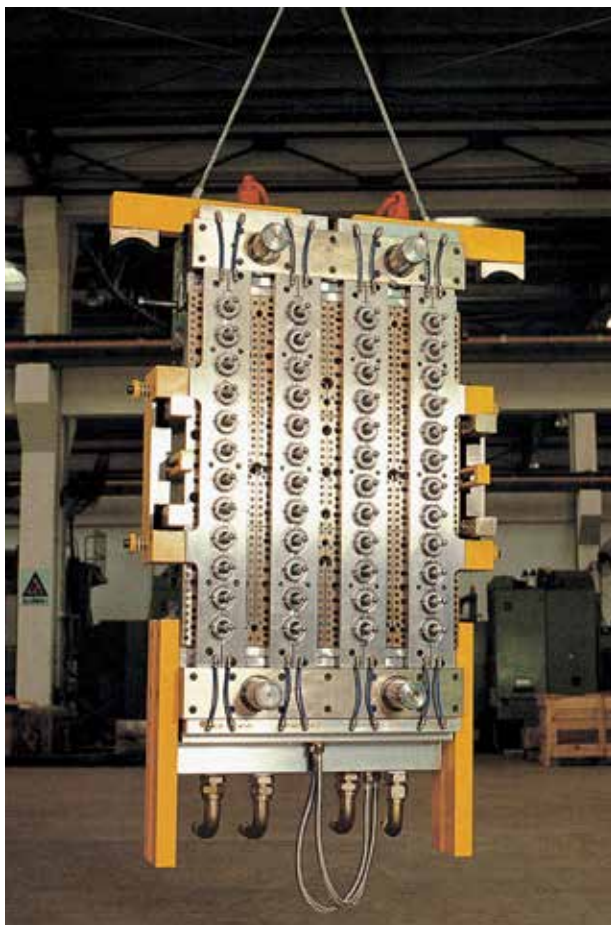
### ■ 特点

1. 可长时间在无油润滑条件下工作。
2. 更适合于重载低速工况条件，具有良好的耐磨性和极低的摩擦系数。
3. 适合于往复、旋转、和间歇运动等油膜难以形成的场合。
4. 具有耐腐蚀和抗化学性。
5. 适用于-40℃+300℃的温度范围。
6. 免维修，使用寿命长。



### ■ Features

1. May work without any oil for long period.
2. Extremely high load capacity, good anti-wear and low friction.
3. Particularly appropriate for low speed and high load.
4. Suitable for reciprocating, oscillation or intermittent motion where oil film is hard to be formed.
5. Good chemical resistant and anti-corrosion characteristics.
6. Can be used in wide range of temp.



### ■ 典型用途

1. 重载、低速自润滑如水坝工作弧门支铰轴承、事故门轴承、水轮机轴承等。
2. 使用于高温场合，如钢铁厂、冶金设备、轧机、输送辊道、高温鼓风机、烘干炉用轴承。
3. 汽机车工业、覆盖件冲压模、组装流水线、传送带等用轴承。
4. 其它工业用轴承、工程机械、注塑机、各种高精度模具等。以及化工机械、食品机械、造纸机械、纺织印染机械等需耐蚀防水浸润场合，重载低速 无法加油的工况场合。

### ■ Application

1. Use for high load low speed and self-lub. like dam gate and water gate bushes, hydraulic turbine bushes etc.
2. Use for high temp. such as iron and steel factory machines and so on.
3. Automobile production, like assembly lines, press lines, conveyor lines and so on.
4. Heavy duty machineries like steel rolling mills, injection machines, press dies etc.
5. And any others like chemical machines, food processing machines, paper mills, textile machines etc.

**FYB500 磨损性能 Wear Performance** 与CuZn6Zn6Pb青铜套的比较耐磨性能如比下表 (Compared with CuZn6Zn6Pb-Composed Bushing):

试驾压强 Load Applied		62N/mm <sup>2</sup>		24.5N/mm <sup>2</sup>		14.7N/mm <sup>2</sup>	
项目 Item		磨损量 Wear Capacity	时间 Time	磨损量 Wear Capacity	时间 Time	磨损量 Wear Capacity	时间 Time
型号 Type	润滑条件 Lubrication	(mm)	(mm)	(mm)	(mm)	(mm)	(mm)
铜套 CuSn6Zn6Sn3	油润滑 Oil	0.098	10	0.125	100	0.10	100
<b>FYB501</b>	干摩擦 Dry	0.011	100	0.015	100	0.012	100
<b>FYB502</b>	干摩擦 Dry	0.025	30	0.065	100	0.025	100
<b>FYB503</b>	干摩擦 Dry	0.003	30	0.12	100	0.015	100
<b>FYB504</b>	干摩擦 Dry	0.003	10	0.25	20	0.011	100
<b>FYB505</b>	干摩擦 Dry	0.0022	100	0.013	100	0.01	100

**应用特点 Application characteristic**
**FYB501**

FYB501是通用的基础产品，无论高压、低压、高温、低温、有油润滑、无油润滑还是水中润滑。都能适用。产品的基体是高力黄铜，比一般的铜套硬度提高一倍。耐磨性能提高一倍以上。因此在冶金行业的连铸机、轧机、输送机上都可采用。还用于塑料注塑机锁模机构，挤出机构。高压电的自动开关，建筑机械的起吊支撑部位，以及水利枢纽工程的弧门支撑。滑轮和传动轮部位。还有造纸机烘道、汽车模具、船舶起锚滑动部位等。

Basically general-purpose products, suitable for various circumstances including high or low load, high or low temperature, with oil or oilless lubrication, or even in the water. With its matrix made of high strength brass, its hardness doubles than normal bronze bushings and the wear performance improves in large degree, so it is applicable for continuous casting machine, rolling mill, conveyor of metallurgy industry. It could also be used in plastic injection machines, in the automatic switch of high-tension electricity, in the luffing and supporting parts of construction machines, hydraulic gate supporter, pulley, drive wheels of water control project, and also for drying tunnel of paper machines, auto die, sliding parts for ships unmooring etc.

**FYB502**

FYB502主要适应低载高温中速的使用场合，例如壁炉门铰链、烘炉滚道、轻工机械、机床工业等。

Products of FYB502 series are mainly for circumstances with low load high temperature, for example: gemel of fireplace gate, raceway of baker, machines of light industry, machine tools industry and so on.

**FYB503**

FYB503的内材与FYB502同样，除了具有FYB502的功能外，还体现了节省成本，提高抗压强度和可以端面与基体焊接安装的作用，适用于建筑机械、冶金机械和输送机械中的不加油润滑部位。

The innerside material of products of FYB503 series is the same as that of the FYB502 series, so they could function as well as the that of FYB502 series. In addition, they have other advantages such as saving material costs, improving compressive strength, and that they could be assembled by welding the bushing surface together with other matrix. They are suitable for parts which need not oil lubrication of construction machines, metallurgy machines and conveying machines.

**FYB504**

FYB504是一种典型的省材产品，在机械性能要求不是很高的地方。可作取FYB502替代材料使用。能大大地降低成本，满足使用要求，例：模具导套、注塑机模架等。

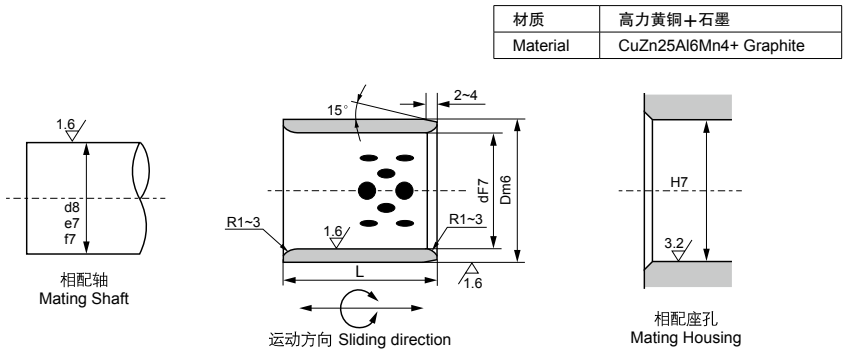
Products of FYB504 are a typical kind of material-saving product. They could replace FYB502 products where the mechanical requirements are not so high. They could reduce the cost largely, and meet the demands for application. Such as: mould guide bushing, die carrier of plastic moulding machines and so on.

**FYB505**

FYB505是一种加强型的产品。它具有极高的抗压性能，在起重机械的支撑部位特别适应，例：挖土机支承、卷扬机支承、吊车支承等。但由于基体为钢材。所以不宜在水中或酸、碱的场合使用。

Products of FYB505 series are a kind of fortified products. Due to its excellent comprehensive capability, it's especially suited in the supporting parts of hoisting machines, for example: support of roofer. support of hoist engine, support of crane and so on. But as for their matrix being steel, they are not suitable for circumstances with water, acid and alkali.

# FYB500A 自润轴套 Oilless Cylindrical bushes



单位unit:mm

IDF7 (内径)	ODm6 (外径)	L <sup>-0.10</sup> / <sub>-0.30</sub>														
		8	10	12	15	16	20	25	30	35	40	50	60	70	80	
8	12	081208	081210	081212	081215											
10	14	101408	101410	101412	101415		101420									
12	18		121810	121812	121815	121816	121820	121825	121830							
13	19		131910		131915	131916										
14	20		142010	142012	142015		142020	142025	142030							
15	21		152110	152112	152115	152116	152120	152125	152130							
16	22		162210	162212	162215	162216	162220	162225	162230	162235	162240					
18	24			182412	182415	182416	182420	182425	182430	182435	182440					
20	28		202810	202812	202815	202816	202820	202825	202830	202835	202840	202850				
22	32			223212	223215		223220	223225								
25	33			253312	253315	253316	253320	253325	253330	253335	253340	253350	253360			
30	38			303812	303815		303820	303825	303830	303835	303840	303850	303860			
35	45						354520	354525	354530	354535	354540	354550	354560			
40	50						405020	405025	405030	405035	405040	405050	405060	405070	405080	
45	55								455530	455535	455540	455550	455560			
50	60								506030	506035	506040	506050	506060	506070	506080	

注：除以上规格尺寸外，可按客户图纸制造。



# FYB500A

## 自润轴套 Oilless Cylindrical bushes

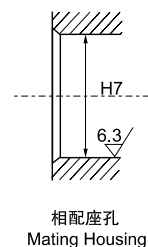
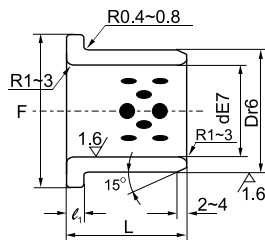
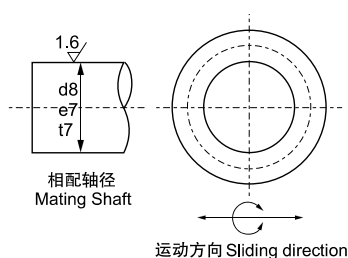


单位unit:mm

IDF7 (内径)	ODm6 (外径)	L <sup>-0.10</sup> / <sub>-0.30</sub>											
		30	35	40	50	60	70	80	100	120	130	140	150
50	62	506230	506235	506240	506250	506260	506270						
50	65	506530		506540	506550	506560	506570	506580	5065100				
55	70			557040	557050	557060	557070						
60	74	607430	607435	607440	607450	607460	607470	607480					
60	75	607530	607535	607540	607550	607560	607570	607580	6075100				
63	75					637560	637570	637580					
65	80				658050	658060	658070	658080					
70	85		708535	708540	708550	708560	708570	708580	7085100				
70	90				709050	709060	709070	709080					
75	90					759060	759070	759080	7590100				
75	95					759560	759570	759580	7595100				
80	96			809640	809650	809660	809670	809680	8096100	8096120			
80	100			8010040	8010050	8010060	8010070	8010080	80100100	80100120		80100140	
90	110	9011030			9011050	9011060	9011070	9011080	90110100	90110120			
100	120					10012060	10012070	10012080	100120100	100120120		100120140	
110	130							11013080	110130100	110130120			
120	140							12014080	120140100	120140120		120140140	
125	145								125145100	125145120			
130	150								130150100		130150130		
140	160								140160100			140160140	
150	170								150170100				150170150
160	180								160180100				160180150
170	190								170190100				170190150
180	200								180200100				180200150
190	210								190210100				190210150
190	220								190220100				200230100
200	230								200230100				210240150
210	240									210240120			220250150
220	250									220250120			220250150
220	260									220260120			220260150

# FYB500B

## 自润翻边轴套 Oilless Flange bushes

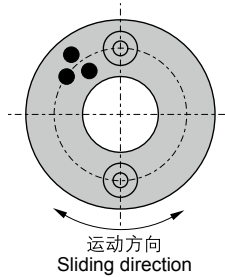


材质	高力黄铜+石墨
Material	CuZn25Al6Mn4+ Graphite

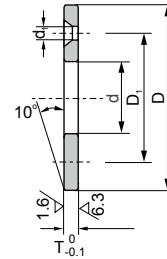
单位unit:mm

IDE7 (内径)	ODr6 (外径)	F	$\ell_1$ -0.10	$L$ $\begin{matrix} -0.10 \\ -0.30 \end{matrix}$												
				15	20	25	30	35	40	50	60	80	100			
10	+0.040 +0.025	14	+0.034 +0.023	22	2	1015F	1020F									
12		18		25	3	1215F	1220F									
13		19		26		1315F	1320F									
14	+0.050 +0.032	20		27		1415F	1420F									
15		21	+0.041 +0.028	28	5	1515F	1520F	1525F	1530F							
16		22		29		1615F	1620F	1625F	1630F							
20		30		40		2015F	2020F	2025F	2030F		2040F					
25	+0.061 +0.040	35		45	7.5	2515F	2520F	2525F	2530F		2540F					
30		40		50			3020F	3025F	3030F	3035F	3040F	3050F				
31.5		40	+0.050 +0.034	60			3120F			3135F						
35		45		65	10		3520F		3530F		3540F	3550F				
40	+0.075 +0.050	50		70			4020F		4030F		4040F	4050F				
45		55		75					4530F		4540F	4550F	4560F			
50		60	+0.060 +0.041	80	10				5030F		5040F	5050F	5060F			
55		65		85							5540F		5560F			
60		75		90							6040F	6050F		6080F		
63		75	+0.062 +0.043	85	10								6367F			
70	+0.090 +0.060	85		105								7050F		7080F		
75		90	+0.073 +0.051	110									7560F			
80		100		120	10								8060F	8080F	80100F	
90		110		130									9060F	9080F		
100	+0.107 +0.072	120	+0.076 +0.054	150											10080F	100100F
120		140	+0.088 +0.063	170										12080F	120100F	

# FYB500C 止推垫片尺寸 Oilless Thrust Washers



材质	高力黄铜+石墨
Material	CuZn25Al6Mn4+ Graphite

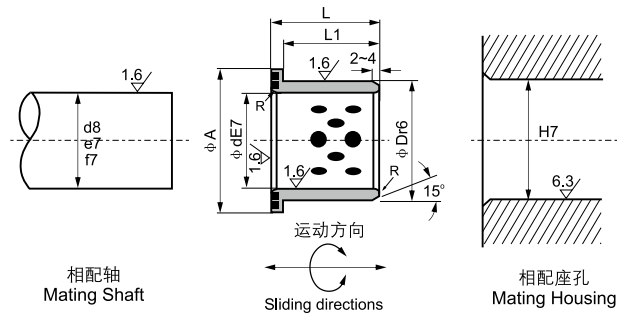


单位unit:mm

规格 Standard No.	d	D	T <sub>-0.1</sub> <sup>0</sup>	螺栓 Bolt							
				D <sub>1</sub>	数量 Q'ty	尺寸 size	d <sub>1</sub>				
FYB500C-10	10.2	30	3	---	---	---	---				
FYB500C-12	12.2	40		28	2	M3	3.5				
FYB500C-13	13.2										
FYB500C-14	14.2										
FYB500C-15	15.2										
FYB500C-16	16.2	50		35	---	---	---				
FYB500C-16N											
FYB500C-18	18.2							35	2	M3	3.5
FYB500C-20	20.2									M5	6
FYB500C-20N	20.2	---		---	---	---					
FYB500C-25	25.2	55	40	2	M5	6					
FYB500C-25N					---	---	---				
FYB500C-30	30.2	60	45	2	M5	6					
FYB500C-35	35.2	70					50				
FYB500C-40	40.2	80	60	2	M6	7					
FYB500C-45	45.3	90					67.5				
FYB500C-50	50.3	100	75	2	M8	9					
FYB500C-55	55.3	110									
FYB500C-60	60.3	120									
FYB500C-65	65.3	125									
FYB500C-70	70.3	130	100	4	M8	9					
FYB500C-75	75.3	140									
FYB500C-80	80.3	150									
FYB500C-90	90.5	170									
FYB500C-100	100.5	190	160	4	M10	11					
FYB500C-120	120.5	200									

# FYB500D 自润翻边轴套 Oilless Flange Bushes

## FYB500E 自润导向套 Oilless Guide Bushes



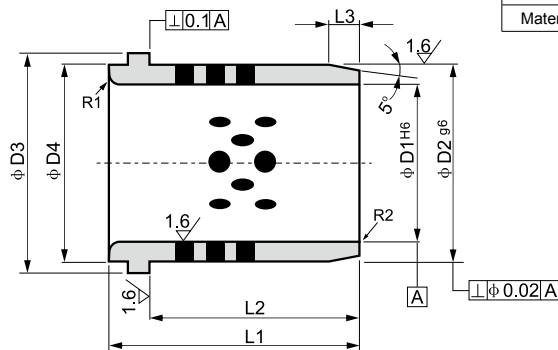
材质	高力黄铜+石墨
Material	CuZn25Al6Mn4+ Graphite

单位unit:mm

Stanard No. 规格	$\phi d$	E7	$\phi D$	r6	$\phi A$	L1	L
FYB500D-12 × 15	12	+0.050	18	+0.034 +0.023	25	11	15
FYB500D-16 × 20	16	+0.032	22	+0.041 +0.028	30	15	20
FYB500D-20 × 25	20	+0.061	28	+0.050 +0.034	36	20	25
FYB500D-25 × 30	25	+0.040	33	+0.060 +0.041	43	25	30
FYB500D-30 × 35	30	+0.075 +0.050	38	+0.050 +0.034	48	30	35
FYB500D-40 × 45	40	+0.075 +0.050	50	+0.060 +0.041	60	40	45
FYB500D-50 × 55	50	+0.090 +0.060	62	+0.062 +0.043	75	49	55
FYB500D-60 × 65	60	+0.090 +0.060	75	+0.062 +0.043	90	58	65

注：除以上规格尺寸外，可按客户图纸制造。

Note: In addition to the above specifications of size, manufactured according to customer drawings .



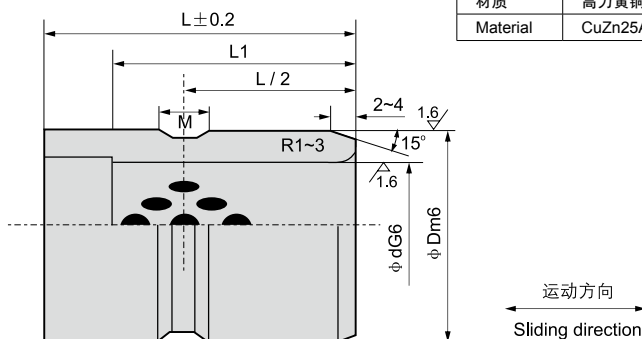
材质	高力黄铜+石墨
Material	CuZn25Al6Mn4+ Graphite

单位unit:mm

规格 Standard No.	D1	H6	D2	g6	D3	D4	L1	L2	L3	R1
FYB500E 32 × 50	32	+0.016 0	40	-0.009	50	40	50	40	4	3
FYB500E 40 × 63	40		50	-0.025	63	50	63	50	5	3
FYB500E 50 × 71	50		63	-0.010	71	63	71	56	6	5
FYB500E 63 × 80	63	+0.019 0	80	-0.029	90	80	80	63	8	6
FYB500E 80 × 100	80		100	-0.012 -0.034	112	100	100	80	10	8
FYB500E 100 × 125	100	+0.022 0	125	-0.014	140	125	125	106	12	10
FYB500E 115 × 140	115		140	-0.039	155	140	140	120	12	10

# FYB500F

## 自润滑导向套 Oilless Guide Bushes



材质	高力黄铜+石墨
Material	CuZn25Al6Mn4+ Graphite

单位unit:mm

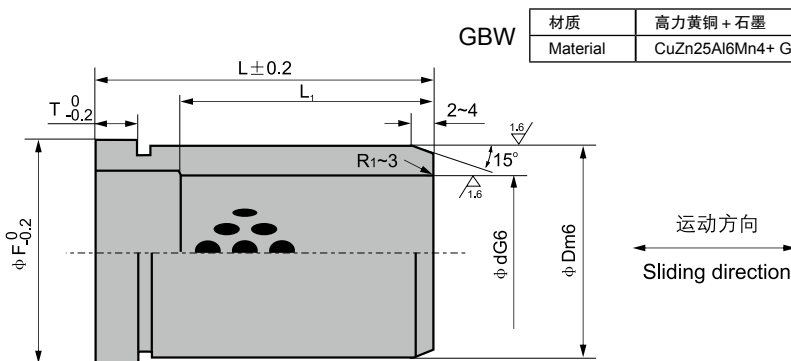
Stanard No. 规格	φ d G6	φ D m6	L	L1	M	
FYB500F-12 × 9	12	18	9	9	-	
FYB500F-12 × 14			14	14	4	
FYB500F-12 × 19			19	19		
FYB500F-12 × 24			24	24		
FYB500F-13 × 14	13	20	14	14		6
FYB500F-13 × 19			19	19		
FYB500F-13 × 24			24	24		
FYB500F-13 × 29			29	29		
FYB500F-13 × 34	16	25	34	30	6	
FYB500F-16 × 14			14	14		4
FYB500F-16 × 19			19	19		
FYB500F-16 × 24			24	24		
FYB500F-16 × 29	20	30	29	29	6	
FYB500F-16 × 34			34	34		
FYB500F-16 × 39			39	35		
FYB500F-20 × 14			14	14		4
FYB500F-20 × 19	19	19				
FYB500F-20 × 24	24	24				
FYB500F-20 × 29	29	29				
FYB500F-20 × 34	25	35	34	34	6	
FYB500F-20 × 39			39	39		
FYB500F-20 × 49			49	40		
FYB500F-25 × 24			24	24		8
FYB500F-25 × 29	29	29				
FYB500F-25 × 34	34	34				
FYB500F-25 × 39	39	39				
FYB500F-25 × 49	30	42	49	49	8	
FYB500F-25 × 59			59	50		
FYB500F-30 × 29			29	29		8
FYB500F-30 × 34			34	34		
FYB500F-30 × 39	39	39				
FYB500F-30 × 49	49	49				
FYB500F-30 × 59	80	100	69	69	10	
FYB500F-30 × 69			69	69		
FYB500F-30 × 79			79	79		
FYB500F-30 × 89			89	89		
FYB500F-30 × 99	80	100	99	99	10	
FYB500F-30 × 109			109	109		
FYB500F-30 × 119			119	119		
FYB500F-30 × 129			129	129		

单位unit:mm

Stanard No. 规格	φ d G6	φ D m6	L	L1	M
FYB500F-35 × 29	35	48	29	29	8
FYB500F-35 × 34			34	34	
FYB500F-35 × 39			39	39	
FYB500F-35 × 49			49	49	
FYB500F-35 × 59	40	55	59	59	10
FYB500F-35 × 69			69	69	
FYB500F-35 × 79			79	70	
FYB500F-40 × 39			39	39	
FYB500F-40 × 49	49	49			
FYB500F-40 × 59	59	59			
FYB500F-40 × 69	69	69			
FYB500F-40 × 79	50	70	79	79	10
FYB500F-40 × 89			89	80	
FYB500F-50 × 49			49	49	
FYB500F-50 × 59			59	59	
FYB500F-50 × 69	60	80	69	69	10
FYB500F-50 × 79			79	79	
FYB500F-50 × 89			89	89	
FYB500F-50 × 99			99	90	
FYB500F-60 × 59	70	90	59	59	10
FYB500F-60 × 69			69	69	
FYB500F-60 × 79			79	79	
FYB500F-60 × 89			89	89	
FYB500F-60 × 99	80	100	99	99	10
FYB500F-60 × 109			109	90	
FYB500F-70 × 69			69	69	
FYB500F-70 × 79			79	79	
FYB500F-70 × 89	80	100	89	89	10
FYB500F-70 × 99			99	99	
FYB500F-70 × 109			109	100	
FYB500F-70 × 119			119	100	
FYB500F-80 × 69	80	100	69	69	10
FYB500F-80 × 79			79	79	
FYB500F-80 × 89			89	89	
FYB500F-80 × 99			99	99	
FYB500F-80 × 109	80	100	109	109	10
FYB500F-80 × 119			119	100	
FYB500F-80 × 129			129	100	
FYB500F-80 × 139			139	100	

# FYB500G

## 自润滑翻边导向套 Oilless Flanged Guide Bushes



单位unit:mm

Stanard No. 规格	φ d G6	φ D m6	φ F	T	L	L <sub>1</sub>
FYB500G-12 × 19	12	18	+0.018 +0.007	4	19	19
FYB500G-12 × 24					24	24
FYB500G-12 × 29					29	29
FYB500G-12 × 34					34	34
FYB500G-13 × 19	13	20	5	25	19	19
FYB500G-13 × 24					24	24
FYB500G-13 × 29					29	29
FYB500G-13 × 34					34	25
FYB500G-13 × 39	13	20	5	25	39	
FYB500G-16 × 19					19	19
FYB500G-16 × 24					24	24
FYB500G-16 × 29					29	29
FYB500G-16 × 34	16	25	30	6	34	
FYB500G-16 × 39					39	30
FYB500G-16 × 49					49	
FYB500G-20 × 19					19	19
FYB500G-20 × 24	20	30	35	8	24	24
FYB500G-20 × 29					29	29
FYB500G-20 × 34					34	34
FYB500G-20 × 39					39	39
FYB500G-20 × 49	20	30	35	8	49	40
FYB500G-20 × 59					59	
FYB500G-25 × 24					24	24
FYB500G-25 × 29					29	29
FYB500G-25 × 34	25	35	40	8	34	34
FYB500G-25 × 39					39	39
FYB500G-25 × 49					49	49
FYB500G-25 × 59					59	50
FYB500G-25 × 69	25	35	40	8	69	
FYB500G-30 × 29					29	29
FYB500G-30 × 34					34	34
FYB500G-30 × 39					39	39
FYB500G-30 × 49	30	42	47	10	49	49
FYB500G-30 × 59					59	59
FYB500G-30 × 69					69	
FYB500G-30 × 79					79	60

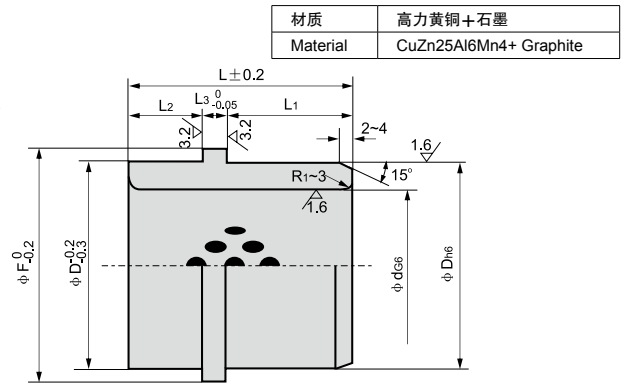
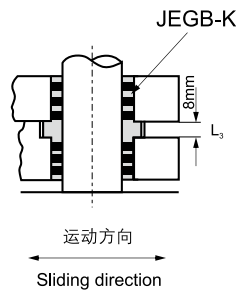
单位unit:mm

Stanard No. 规格	φ d G6	φ D m6	φ F	T	L	L <sub>1</sub>	
FYB500G-35 × 39	35	48	+0.025 +0.009	54	10	39	39
FYB500G-35 × 49						49	49
FYB500G-35 × 59						59	59
FYB500G-35 × 69						69	69
FYB500G-35 × 79	35	48	+0.025 +0.009	54	10	79	
FYB500G-35 × 89						89	70
FYB500G-35 × 99						99	
FYB500G-40 × 39						39	39
FYB500G-40 × 49	40	55	61	10	49	49	
FYB500G-40 × 59					59	59	
FYB500G-40 × 69					69	69	
FYB500G-40 × 79					79	79	
FYB500G-40 × 89	40	55	61	10	89		
FYB500G-40 × 99					99	80	
FYB500G-40 × 109					109		
FYB500G-50 × 49					49	49	
FYB500G-50 × 59	50	70	76	12	59	59	
FYB500G-50 × 69					69	69	
FYB500G-50 × 79					79	79	
FYB500G-50 × 89					89	89	
FYB500G-50 × 99	50	70	76	12	99		
FYB500G-50 × 109					109	90	
FYB500G-50 × 119					119		
FYB500G-60 × 99					99	99	
FYB500G-60 × 109	60	80	86	15	109	109	
FYB500G-60 × 119					119		
FYB500G-60 × 129					129	110	
FYB500G-60 × 149					149		
FYB500G-70 × 99	70	90	96	15	99	99	
FYB500G-70 × 109					109	109	
FYB500G-70 × 119					119	119	
FYB500G-70 × 129					129	120	
FYB500G-70 × 149	70	90	96	15	149		
FYB500G-80 × 99					99	99	
FYB500G-80 × 109					109	109	
FYB500G-80 × 119					119	119	
FYB500G-80 × 129	80	100	108	15	129	120	
FYB500G-80 × 149					149		

注：除以上规格尺寸外，可按客户图纸制造。

Note: In addition to the above specifications of size, manufactured according to customer drawings.

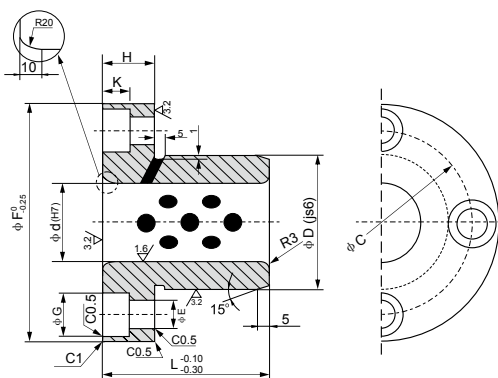
# FYB500H, FYB500H-K 射出座导套 Oilless Ejector Guide Bushes



单位unit:mm

规格 Standard No.	$\phi d$ G6	$\phi D$ h6	$\phi F$	L	L <sub>1</sub>	L <sub>2</sub>	L <sub>3</sub>		
FYB500H-10 × 24	10	16	21	24	10	10	4		
FYB500H-10 × 28				28	14				
FYB500H-12 × 26	12	18	25	26	12				
FYB500H-12 × 28				28	14				
FYB500H-13 × 26	13	22	30	26	12				
FYB500H-13 × 28				28	14				
FYB500H-13 × 33				33	19				
FYB500H-13 × 38				38	24				
FYB500H-16 × 26	16	25	35	26	12				
FYB500H-16 × 28				28	14				
FYB500H-16 × 33				33	19				
FYB500H-16 × 38				38	24				
FYB500H-20 × 26	20	30	40	26	12				
FYB500H-20 × 28				28	14				
FYB500H-20 × 33				33	19				
FYB500H-20 × 38				38	24				
FYB500H-25 × 26	25	35	45	26	12				
FYB500H-25 × 28				28	14				
FYB500H-25 × 33				33	19				
FYB500H-25 × 38				38	24				
FYB500H-30 × 33	30	40	50	33	14			15	8
FYB500H-30 × 38				38	19				
FYB500H-30 × 43				43	24				
FYB500H-32 × 38	32	42	57	38	19				
FYB500H-32 × 43				43	24				
FYB500H-32 × 48				48	29				
FYB500H-35 × 38	35	46	60	38	19				
FYB500H-35 × 43				43	24				
FYB500H-35 × 48				48	29				
FYB500H-40 × 48	40	52	67	48	24	20	8		
FYB500H-40 × 53				53	29				
FYB500H-50 × 48	50	62	74	48	24				
FYB500H-50 × 53				53	29				
FYB500H-K-30 × 37	30	42	47	37	14			15	8
FYB500H-K-30 × 42				42	19				
FYB500H-K-30 × 47				47	24				
FYB500H-K-30 × 52				52	29				
FYB500H-K-40 × 53	40	55	60	53	20	25	8		
FYB500H-K-40 × 57				57	24				
FYB500H-K-40 × 60				60	32			20	
FYB500H-K-40 × 67				67	29			30	
FYB500H-K-40 × 70	50	62	74	50	30	30	8		
FYB500H-K-40 × 70				50	30			20	
FYB500H-K-50 × 67				67	29			30	
FYB500H-K-50 × 87	50	74	82	87	39	40	8		
FYB500H-K-60 × 67				67	29			30	
FYB500H-K-60 × 87	60	74	82	87	39	40	8		

# FYB500I 自润导向套 Oilless Guide Bushes

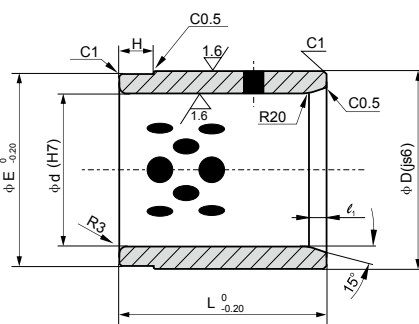


材质	高力黄铜+石墨
Material	CuZn25Al6Mn4+ Graphite
材质	FC铸铁+石墨
Material	HT250#+ Graphite

单位unit:mm

项目 Items	代号 code	尺寸 Size	ΦF	ΦD	Φd	H	L	ΦC	ΦE	ΦG	K
1	30	90 × 50 × 30 × 50	90	50	30	20	50	70	11	17.5	10.8
2	40	100 × 60 × 40 × 65	100	60	40	20	65	80	11	17.5	10.8
3	50	125 × 75 × 50 × 80	125	75	50	20	80	100	11	17.5	10.8
4	60	135 × 85 × 60 × 100	135	85	60	20	100	110	11	17.5	10.8
5	80	170 × 110 × 80 × 130	170	110	80	25	130	140	14	20	13
6	100	190 × 130 × 100 × 160	190	130	100	25	160	160	14	20	13

# FYB500J/S 自润导向套 Oilless Guide Bushes



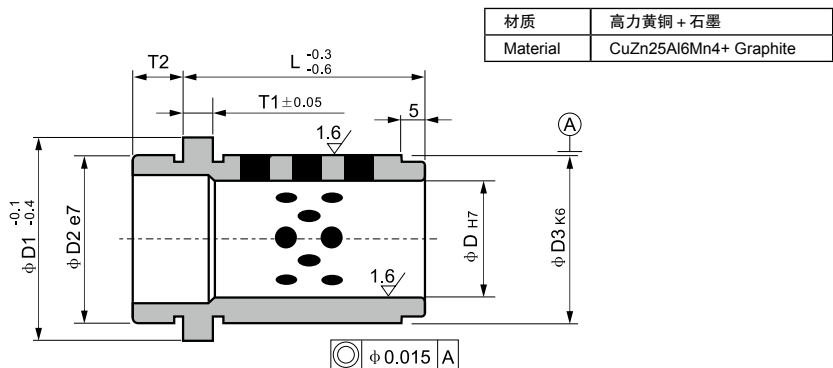
FYB500J	材质	高力黄铜+石墨
	Material	CuZn25Al6Mn4+ Graphite
FYB500S	材质	FC铸铁+石墨
	Material	HT250#+ Graphite

单位unit:mm

项目 Items	代号 code	尺寸 Size	ΦD	Φd	L	ΦE	H	ΦC <sub>1</sub>
1	30	50 × 30 × 50	50	30	50	49	10	5
2	40	60 × 40 × 60	60	40	60	59	10	
3	50	70 × 50 × 75	70	50	75	69	15	
4	60	80 × 60 × 90	80	60	90	79	20	10
5	80	100 × 80 × 120	100	80	120	99	25	
6	100	120 × 100 × 130	120	100	150	119	25	
7	120	140 × 120 × 180	140	120	180	139	25	



# FYB500K 自润翻边轴套 Oilless Flange Bushes



单位unit:mm

T1	T2	D1	D2	D3	D	L	Code	D	Code
3	3	16	14	14	9	12	FYB500K 09 012	10	FYB500K 10 012
						17	FYB500K 09 017		FYB500K 10 017
						22	FYB500K 09 022		FYB500K 10 022
						27	FYB500K 09 027		FYB500K 10 027
						36	FYB500K 09 036		FYB500K 10 036
6	6	25	20	20	14	17	FYB500K 14 017	15	FYB500K 15 017
						22	FYB500K 14 022		FYB500K 15 022
						27	FYB500K 14 027		FYB500K 15 027
						36	FYB500K 14 036		FYB500K 15 036
						46	FYB500K 14 046		FYB500K 15 046
						56	FYB500K 14 056		FYB500K 15 056
6	8	31	26	26	18	17	FYB500K 18 017	20	FYB500K 20 017
						22	FYB500K 18 022		FYB500K 20 022
						27	FYB500K 18 027		FYB500K 20 027
						36	FYB500K 18 036		FYB500K 20 036
						46	FYB500K 18 046		FYB500K 20 046
						56	FYB500K 18 056		FYB500K 20 056
						66	FYB500K 18 066		FYB500K 20 066

注：除以上规格尺寸外，可按客户图纸制造。

Note: In addition to the above specifications of size, manufactured according to customer drawings .

单位unit:mm

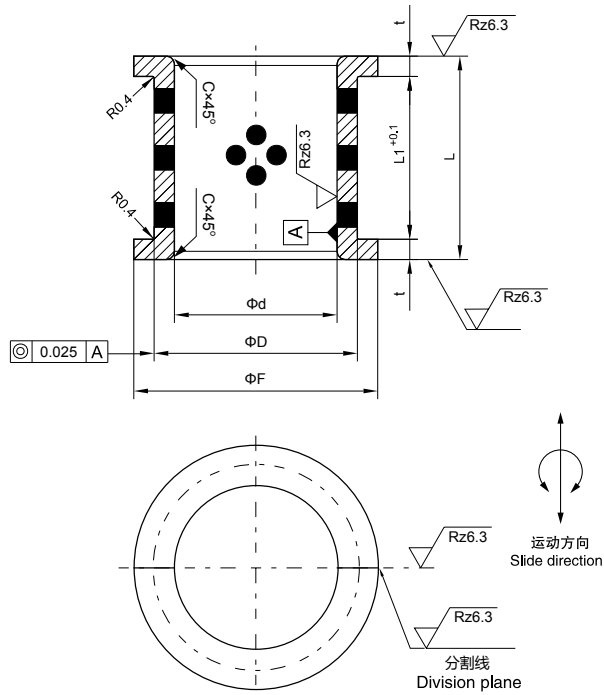
T1	T2	D1	D2	D3	D	L	Code	D	Code
6	8	36	30	30	22	17	FYB500K 22 017	24	FYB500K 24 017
						22	FYB500K 22 022		FYB500K 24 022
						27	FYB500K 22 027		FYB500K 24 027
						36	FYB500K 22 036		FYB500K 24 036
						46	FYB500K 22 046		FYB500K 24 046
						56	FYB500K 22 056		FYB500K 24 056
						66	FYB500K 22 066		FYB500K 24 066
						76	FYB500K 22 076		FYB500K 24 076
						86	FYB500K 22 086		FYB500K 24 086
6	8	47	42	42	30	27	FYB500K 30 027	32	FYB500K 32 027
						36	FYB500K 30 036		FYB500K 32 036
						46	FYB500K 30 046		FYB500K 32 046
						56	FYB500K 30 056		FYB500K 32 056
						66	FYB500K 30 056		FYB500K 32 066
						76	FYB500K 30 076		FYB500K 32 076
						86	FYB500K 30 086		FYB500K 32 086
						96	FYB500K 30 096		FYB500K 32 096
						116	FYB500K 30 116		FYB500K 32 116
10	12	60	54	54	40	46	FYB500K 40 046	42	FYB500K 42 046
						56	FYB500K 40 056		FYB500K 42 056
						66	FYB500K 40 066		FYB500K 42 066
						76	FYB500K 40 076		FYB500K 42 076
						86	FYB500K 40 086		FYB500K 42 086
						96	FYB500K 40 096		FYB500K 42 096
						116	FYB500K 40 116		FYB500K 42 116
						136	FYB500K 40 136		FYB500K 42 136
						156	FYB500K 40 156		FYB500K 42 156

# FYB500L

## 自润滑轴瓦 Half-Bearing



材料: 高力黄铜+固体润滑剂  
 Material: CuZn25Al5Mn4Fe3  
 +Graphite(500#SP)



单位unit:mm

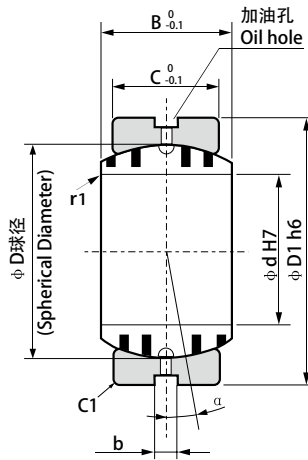
产品代号 Part No.	I.D. $\phi d$ 内径 H7	O.D. $\phi D$ 外径		$\phi F$ d11	L h12	$L1^{+0.1}_0$	t	C
FYB500L-030	30	38	s6	48	34	22	6	1
FYB500L-035	35	45	"	55	45	32	6.5	"
FYB500L-040	40	50	"	60	50	35	7.5	"
FYB500L-045	45	55	"	65	55	40	7.5	"
FYB500L-050	50	60	"	70	60	45	7.5	"
FYB500L-060	60	70	"	80	70	50	10	2
FYB500L-070	70	85	"	95	80	60	10	"
FYB500L-080	80	95	"	110	95	70	12.5	"
FYB500L-090	90	105	"	120	105	80	12.5	"
FYB500L-100	100	115	"	130	115	90	12.5	"
FYB500L-110	110	125	r6	140	125	100	12.5	"
FYB500L-120	120	135	"	150	140	110	15	"
FYB500L-140	140	160	"	175	160	120	20	"
FYB500L-160	160	180	"	200	180	140	20	"

# FYB500M

## 标准自润滑球铰 Oilless Spherical Plain Bushing

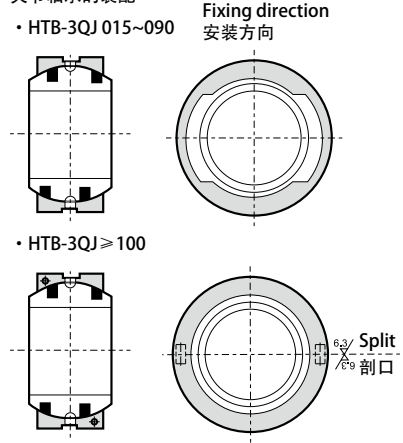


内圈 Inner ring  
 材料: 高力黄铜+固体润滑剂  
 Material: CuZn25Al5Mn3Fe3  
 +Graphite (500#SP)  
 外圈 Outer ring  
 材料 Material: S45C  
 硬度 Hardness: HRC 25~30



### Spherical bushing assembly

关节轴承的装配

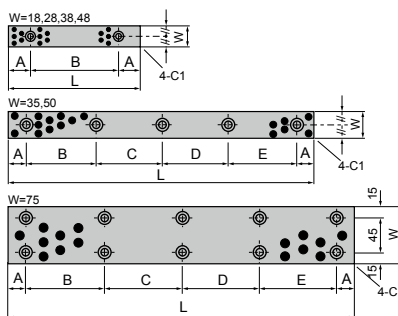


单位unit:mm

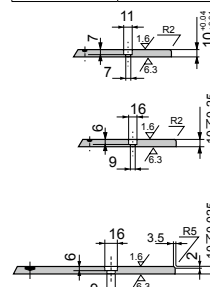
产品代号 Part No.	d	H7	D1	h6	B	C	D	b	调整角度 Alignment Angle α °	径向承载 Allowable Radial Load (kN)	轴向承载 Allowable Thrust Load (kN)
FYB500M-015	15	$+0.018$ 0	26	$0$ -0.013	12	9	22	4	8	6.5	0.5
FYB500M-020	20	$+0.021$ 0	32	$0$ -0.016	16	14	28	"	4	12.6	1.4
FYB500M-025	25	"	42	"	21	18	36	"	5	21.8	2.5
FYB500M-030	30	"	50	"	27	23	44	"	6	32.0	3.5
FYB500M-035	35	$+0.025$ 0	55	$0$ -0.019	30	26	49	"	5	43.7	4.8
FYB500M-040	40	"	62	"	33	28	55	"	6	54.7	5.7
FYB500M-045	45	"	72	"	36	31	62	"	5	69.7	7.2
FYB500M-050	50	"	80	"	42	36	70	"	"	92.4	10
FYB500M-060	60	$+0.030$ 0	100	$0$ -0.022	53	45	90	"	6	143	16
FYB500M-070	70	"	110	"	58	50	99	"	5	181	20
FYB500M-080	80	"	130	"	70	60	115	"	6	254	30
FYB500M-090	90	$+0.035$ 0	140	$0$ -0.025	76	65	125	"	"	313	36
FYB500M-100	100	"	160	"	88	75	145	6	"	544	64
FYB500M-110	110	"	170	"	93	80	155	"	5	642	73
FYB500M-120	120	"	190	$0$ -0.029	105	90	17	"	6	797	94
FYB500M-130	130	$+0.040$ 0	200	"	110	95	180	"	5	880	105
FYB500M-140	140	"	210	"	90	70	"	"	7	668	56
FYB500M-150	150	"	220	"	120	105	200	"	5	1135	129
FYB500M-160	160	"	230	"	105	80	"	"	8	891	73
FYB500M-180	180	"	260	$0$ -0.032	105	"	225	"	6	1002	74
FYB500M-200	200	$+0.046$ 0	290	"	130	100	250	"	7	1434	117
FYB500M-220	220	"	320	$0$ -0.036	135	"	275	"	8	1577	118
FYB500M-240	240	"	340	"	140	"	300	9	"	1720	"
FYB500M-260	260	$+0.052$ 0	370	"	150	110	325	"	7	2072	143
FYB500M-280	280	"	400	"	155	120	350	"	6	2455	172
FYB500M-300	300	"	430	$0$ -0.040	165	120	375	"	7	2630	"

# FYB500N

## 滑板尺寸 Oilless Sliding Plate



材质	高力黄铜+石墨
Material	CuZn25Al6Mn4+ Graphite



单位unit:mm

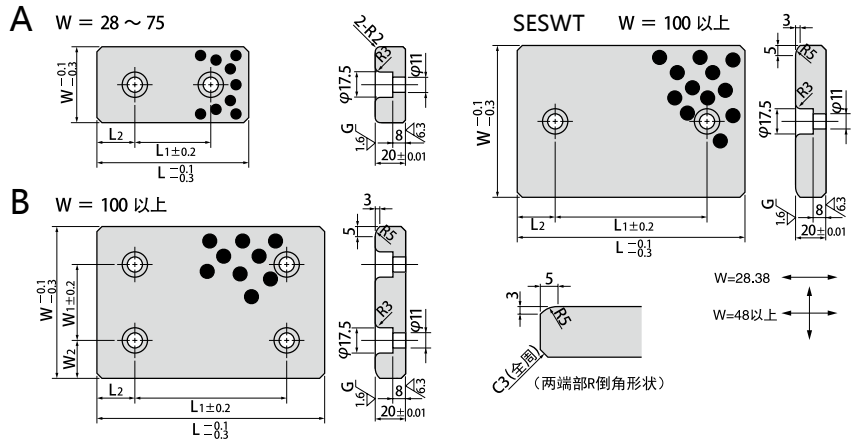
型号规格 Standard No.	W	L	A	B	C	D	E	平头螺钉 Flat Head Screw	数量 No. of Holes
FYB500N-1875	18	75	15	45				M6	2
FYB500N-18100		100		60					
FYB500N-18125		125	25	75					
FYB500N-18150		150		100					
FYB500N-2875	28	75	15	45				M6	2
FYB500N-28100		100		50					
FYB500N-28125		125	25	75					
FYB500N-28150		150		100					
FYB500N-35100	35	100		60				M8	3
FYB500N-35150		150		55	55				
FYB500N-35200		200		55	50	55			
FYB500N-35250		250		70	70	70			
FYB500N-35300		300		65	65	65	65		
FYB500N-35350		350		80	75	75	80		
FYB500N-3875	38	75	15	45				M6	2
FYB500N-38100		100		50					
FYB500N-38125		125	25	75					
FYB500N-38150		150		100					
FYB500N-4875	48	75	15	45				M6	2
FYB500N-48100		100		50					
FYB500N-48125		125	25	75					
FYB500N-48150		150		100					
FYB500N-50100	50	100		60				M8	3
FYB500N-50150		150		55	55				
FYB500N-50200		200		55	50	55			
FYB500N-50250		250		70	70	70			
FYB500N-50300		300		65	65	65	65		
FYB500N-50400		400		90	90	90	90		
FYB500N-75150	75	150	20	110				M8	4
FYB500N-75200		200		80	80				
FYB500N-75250		250		105	105				
FYB500N-75300		300		85	90	85			
FYB500N-75400		400		120	120	120			
FYB500N-75500		500		115	115	115	115		

# FYB5000

## 20mm 厚度自润滑导板 Oilless Wear Plate



材质	高力黄铜+石墨
Material	CuZn25Al6Mn4+ Graphite

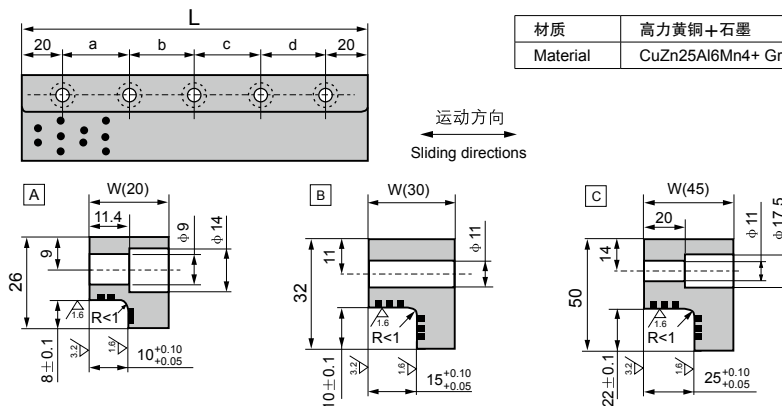
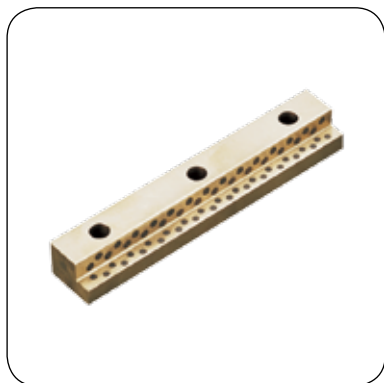


单位unit:mm

产品代号 Part No.	W	L	W <sub>1</sub>	L <sub>1</sub>	L <sub>2</sub>	Catalog No.	
FYB5000 - 2875	28	75	-	45	15	A	FYB5000
FYB5000 - 28100		100	-	50	25		
FYB5000 - 28150		150	-	100	25		
FYB5000 - 3875	38	75	-	45	15		
FYB5000 - 38100		100	-	50	25		
FYB5000 - 38150		150	-	100	25		
FYB5000 - 4875	48	75	-	45	15		
FYB5000 - 48100		100	-	50	25		
FYB5000 - 48125		125	-	75	25		
FYB5000 - 48150		150	-	100	25		
FYB5000 - 48200		200	-	150	25		
FYB5000 - 5875	58	75	-	45	15		
FYB5000 - 58100		100	-	50	25		
FYB5000 - 58150		150	-	100	25		
FYB5000 - 7575	75	75	-	25	25		
FYB5000 - 75100		100	-	50	25		
FYB5000 - 75125		125	-	75	25		
FYB5000 - 75150		150	-	100	25		
FYB5000 - 75200		200	-	150	25		
FYB5000 - 100100	100	100	50	50	25	B	FYB5000 FYB500OT
FYB5000 - 100125		125	50	75	25		
FYB5000 - 100150		150	50	100	25		
FYB5000 - 100200		200	50	150	25		
FYB5000 - 100250		250	50	200	25		
FYB5000 - 100300		300	50	200	50		
FYB5000 - 125125	125	125	50	75	25		
FYB5000 - 125150		150	50	100	25		
FYB5000 - 125200		200	50	150	25		
FYB5000 - 125250		250	50	200	25		
FYB5000 - 125300		300	50	200	50		
FYB5000 - 125350		350	50	200	75		
FYB5000 - 150150	150	150	100	100	25		
FYB5000 - 150200		200	100	150	25		
FYB5000 - 150250		250	100	200	25		

# FYB500P

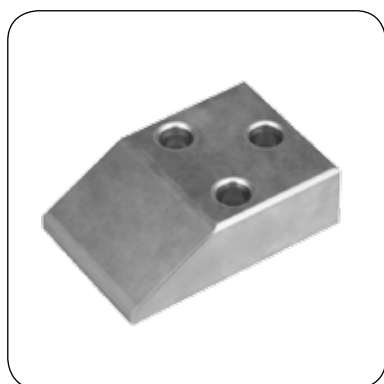
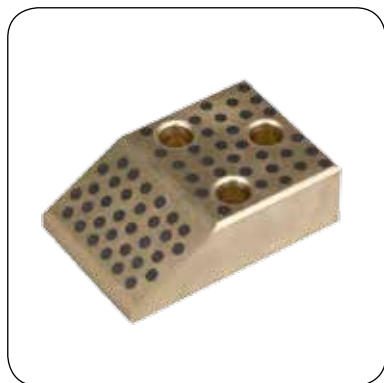
## L型自润滑板 Oilless L Guide Plate



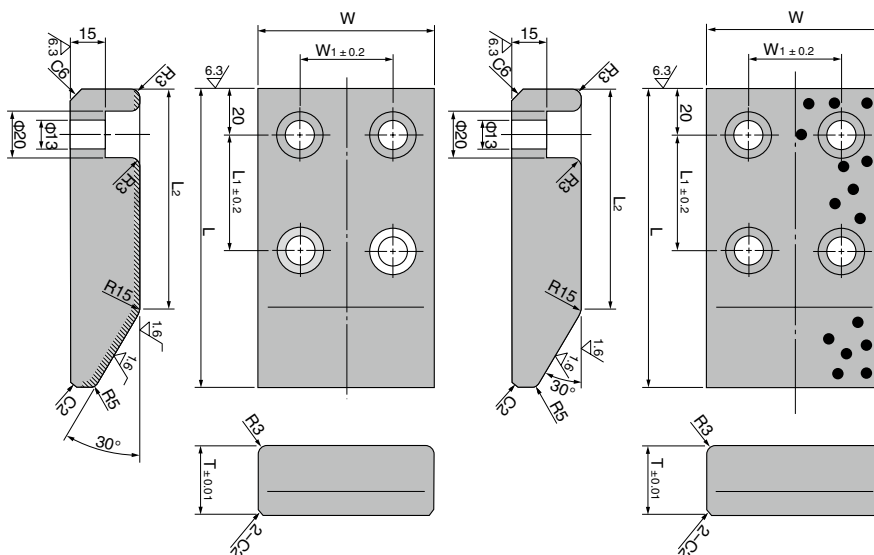
单位unit:mm

规格 Standard No.	W	L	螺孔 Bole Hole				螺栓 Bolt		Type
			a	b	c	d	螺孔 Size	数量 Number	
FYB500P-20×100	20	100	60	—	—	—	M8	2	A
FYB500P-20×150		150	55	55	—	—		3	
FYB500P-20×200		200	55	50	55	—		4	
FYB500P-30×100	30	100	60	—	—	—	M10	2	B
FYB500P-30×150		150	55	55	—	—		3	
FYB500P-30×200		200	55	50	55	—		4	
FYB500P-30×250		250	70	70	70	—		4	
FYB500P-45×200	45	200	55	50	55	—	M10	4	C
FYB500P-45×250		250	70	70	70	—		4	
FYB500P-45×300		300	65	65	65	65		5	
FYB500P-45×350		350	80	75	75	80		5	

# FYB500P / FYB500R 凸轮行程滑板 Cam Stroke Plate



FYB500R	S45C 钢基 + HRC≥55
FYB500P	CuZn25Al6Mn4 + Graphite 高力黄铜 + 石墨



单位unit:mm

Code 型号	W	L	T	W <sub>1</sub>	L <sub>1</sub>	L <sub>2</sub>
FYB500P / FYB500R-75 × 130	75	130	30	40	50	95
FYB500P / FYB500R-75 × 150		150	45		45	90
FYB500P / FYB500R-100 × 130	100	130	30	60	50	95
FYB500P / FYB500R-100 × 150		150	45		45	90
FYB500P / FYB500R-100 × 170		170	60		75	120
FYB500P / FYB500R-100 × 200		200			75	120
FYB500P / FYB500R-125 × 130	125	130	30	85	50	95
FYB500P / FYB500R-125 × 150		150	45		45	90
FYB500P / FYB500R-125 × 170		170	60		75	120
FYB500P / FYB500R-125 × 200		200			75	120
FYB500P / FYB500R-150 × 130	150	130	30	110	50	95
FYB500P / FYB500R-150 × 150		150	45		45	90
FYB500P / FYB500R-150 × 170		170	60		75	120
FYB500P / FYB500R-150 × 200		200			75	120

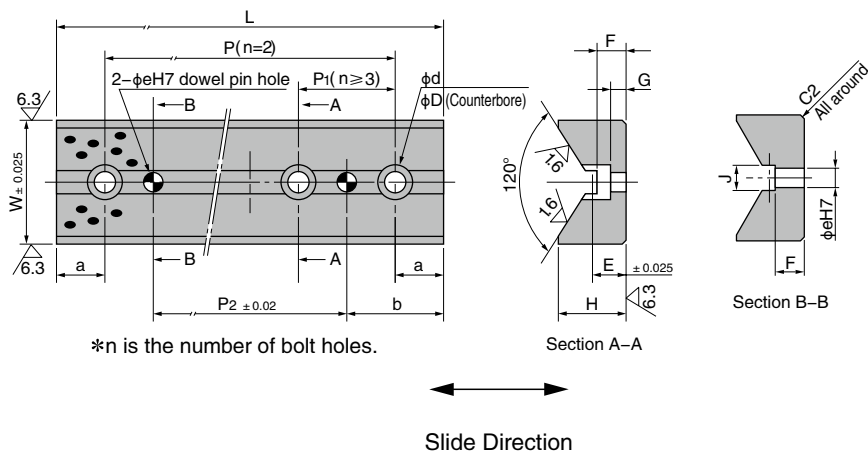
注：除以上规格尺寸外，可按客户图纸制造。

Note: In addition to the above specifications of size, manufactured according to customer drawings .

# FYB500S V 型导板 Cam Slide Guide



材质	高力黄铜 + 石墨
Material	CuZn25Al6Mn4+ Graphite



bolt hole			
W	d	D	
35	9	14	
50-65	11	17.5	

单位unit:mm

Code 型号	W	L	H	$l$	$l_1$	P	P1	n	P2	E	F	G		
FYB500S	65	100	35	25	50	60	-	2	20	18	15	8		
		150							50					
		200							-				4	100
		250							50				5	150
		300							6				200	
FYB500SL	65	100	37	25	50	75	-	2	20	20	20	10		
		125							25					
		150							100				50	
		200							75				100	
		250							-				3	150
		300				125		200						

注：除以上规格尺寸外，可按客户图纸制造。

Note: In addition to the above specifications of size, manufactured according to customer drawings .

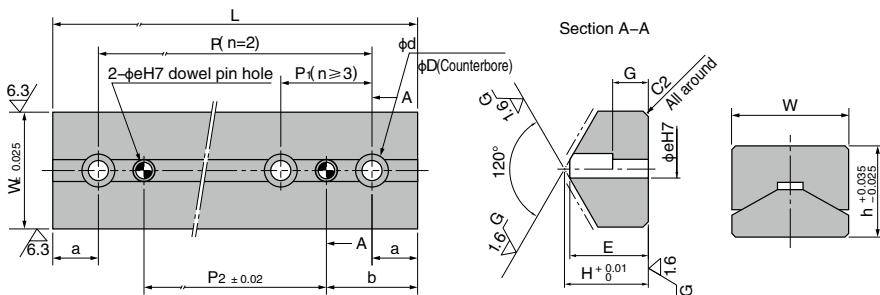


# FYB500T

## V 型导板 Cam Slide Guide



FYB500T	S45C
	钢基 + HRC≥55



\*n is the number of bolt holes.

\*The dowel hole effective depth is 15 mm.

-bolt hole

W	d	D
35	9	14
50-65	11	17.5

-U Total height of Combination  
FYB500T and FYB500TP

W	H
35	35
50	50
65	65

单位unit:mm

Code 型号	W	L	H	$\ell$	$\ell_1$	P	P1	n	P2	E	G
FYB500T	65	100	47	25	50	-	50	2	20	44	20
		150						3	50		
		200						4	100		
		250						5	150		
		300						6	200		
FYB500TL	65	100	30	25	50	-	100	2	25	26	10
		125						75	-		
		150						100	-		
		200						75	100		
		250						-	100		
		300						125	200		

注：除以上规格尺寸外，可按客户图纸制造。

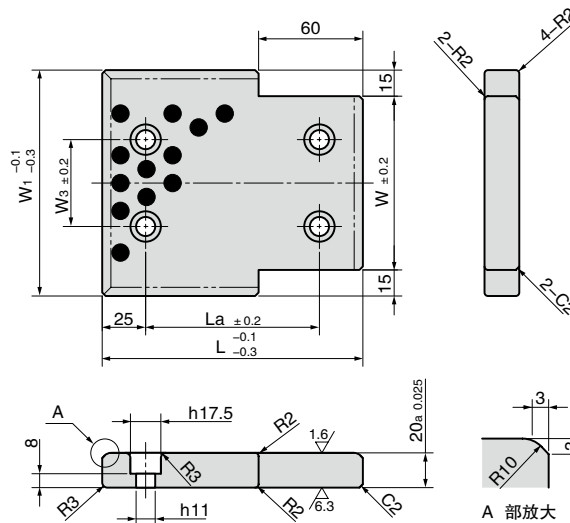
Note: In addition to the above specifications of size, manufactured according to customer drawings .

# FYB500U/FYB500U1/FYB500U2

## 20mm 日系汽车模具自润滑导板 Oilless Wear Plate



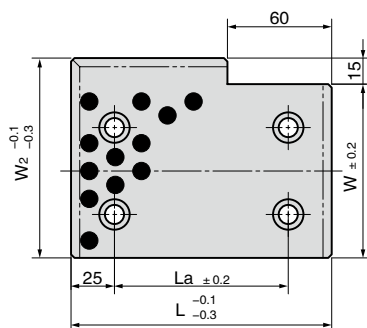
**FYB500U**



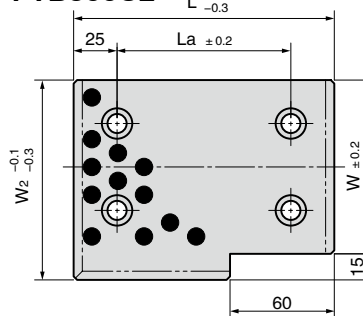
FYB500U  
FYB500U1  
FYB500U2

材料: 高力黄铜+固体润滑剂  
Material: CuZn25Al5Mn3Fe3  
+Graphite (500#sp)

**FYB500U1**



**FYB500U2**

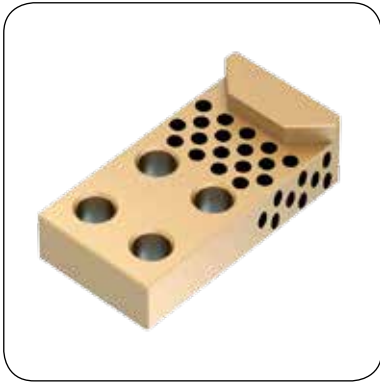


单位unit:mm

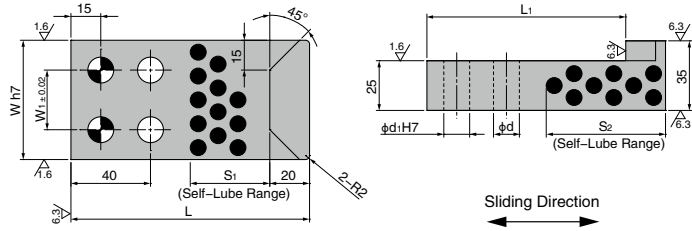
材料 Material	产品代号 Part No.	W	L	W1	W2	W3	La
FYB500U FYB500U1 FYB500U2	75 × 100	75	100	105	90	40	50
	75 × 125	"	125	105	"	"	75
	75 × 150	"	150	105	"	"	100
	100 × 125	100	125	130	115	50	75
	100 × 150	"	150	130	"	"	100
	125 × 150	125	"	155	140	75	"
	125 × 200	"	200	155	"	"	150
	125 × 250	"	250	155	"	"	200
	150 × 200	150	200	180	165	100	150
	150 × 250	"	250	180	"	"	200

# FYB500V

## 自润导板 Cam Pad Guide Plate



材质	高力黄铜 + 石墨
Material	CuZn25Al6Mn4+ Graphite

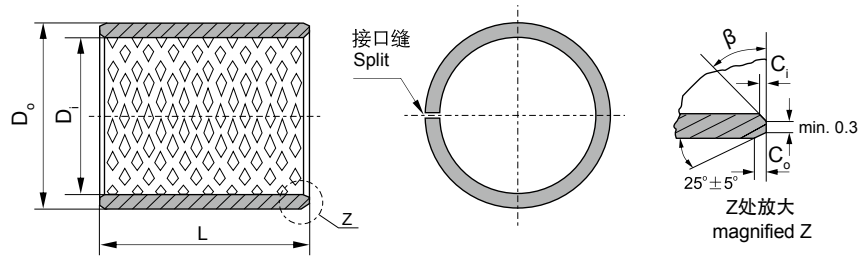


单位unit:mm

Code 型号	W	h7	L <sub>1</sub>	L <sub>2</sub>	S <sub>1</sub>	S <sub>2</sub>	W <sub>1</sub>	d	d <sub>1</sub>
FYB500V-60 × 120			120	100	40	60			
FYB500V-60 × 140	60	$\begin{matrix} 0 \\ -0.030 \end{matrix}$	140	120	60	80	30	13	13
FYB500V-60 × 160			160	140	80	100			
FYB500V-100 × 120			120	100	40	60			
FYB500V-100 × 140	100	$\begin{matrix} 0 \\ -0.035 \end{matrix}$	140	120	60	80	70		
FYB500V-100 × 160			160	140	80	100		18	16
FYB500V-150 × 120			120	100	40	60			
FYB500V-150 × 140	150	$\begin{matrix} 0 \\ -0.040 \end{matrix}$	140	120	60	80	120		
FYB500V-150 × 160			160	140	80	100			

# FYB090 青铜轴套规格及公差

## Bronze Sleeve Bushing Specification & Tolerance



内外倒角 ID and OD chamfers

$S_3$	$C_o$	$C_i$	$\beta$
0.75	$0.5 \pm 0.3$	$0.25 \pm 0.2$	$35^\circ \pm 5^\circ$
1.00	$0.6 \pm 0.3$	$0.30 \pm 0.2$	$35^\circ \pm 5^\circ$
1.50	$0.7 \pm 0.3$	$0.50 \pm 0.3$	$35^\circ \pm 5^\circ$

$S_3$	$C_o$	$C_i$	$\beta$
2.00	$1.2 \pm 0.4$	$0.50 \pm 0.3$	$35^\circ \pm 5^\circ$
2.50	$1.8 \pm 0.6$	$0.60 \pm 0.3$	$45^\circ \pm 5^\circ$

单位Unit: mm

内径 $D_i$ $\phi d$	外径 $D_o$ $\phi D$	长度 $L$ $\begin{smallmatrix} 0 \\ -0.40 \end{smallmatrix}$													
		10	15	20	25	30	35	40	50	60	70	80	90	100	
10	12	1010	1015	1020											
12	14	1210	1215	1220											
14	16	1410	1415	1420	1425										
15	17	1510	1515	1520	1525										
16	18	1610	1615	1620	1625										
18	20	1810	1815	1820	1825										
20	23	2010	2015	2020	2025										
22	25	2210	2215	2220	2225	2230									
24	27		2415	2420	2425	2430									
25	28		2515	2520	2525	2530									
28	31		2815	2820	2825	2830									
30	34		3015	3020	3025	3030	3035	3040							
32	36		3215	3220	3225	3230	3235	3240							
35	39		3515	3520	3525	3530	3535	3540							
40	44			4020	4025	4030	4035	4040	4050						
45	50			4520	4525	4530	4535	4540	4550						
50	55			5020	5025	5030	5035	5040	5050	5060					
55	60			5520	5525	5530	5535	5540	5550	5560					
60	65				6025	6030	6035	6040	6050	6060	6070				
65	70					6530	6535	6540	6550	6560	6570				
70	75					7030	7035	7040	7050	7060	7070	7080			
75	80					7530	7535	7540	7550	7560	7570	7580			
80	85					8030	8035	8040	8050	8060	8070	8080			
85	90					8530	8535	8540	8550	8560	8570	8580	8590		
90	95					9030	9035	9040	9050	9060	9070	9080	9090		
95	100							9540	9550	9560	9570	9580	9590	95100	

# FYB090 青铜轴套规格及公差

## Bronze Sleeve Bushing Specification & Tolerance

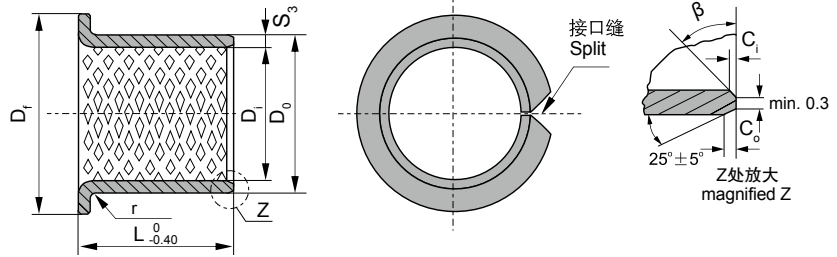


单位Unit: mm

内径 D <sub>i</sub> φd	外径 D <sub>o</sub> φD	长度 L <sup>0</sup> / <sub>-0.40</sub>									
		25	30	35	40	50	60	70	80	90	100
100	105					10050	10060	10070	10080	10090	100100
105	110					10550	10560	10570	10580	10590	105100
110	115					11050	11060	11070	11080	11090	110100
120	125						12060	12070	12080	12090	120100
125	130						12560	12570	12580	12590	125100
130	135						13060	13070	13080	13090	130100
135	140						13560	13570	13580	13590	135100
140	145						14060	14070	14080	14090	140100
145	150						14560	14570	14580	14590	145100
150	155						15060	15070	15080	15090	150100
155	160						15560	15570	15580	15590	155100
160	165						16060	16070	16080	16090	160100
165	170						16560	16570	16580	16590	165100
170	175						17060	17070	17080	17090	170100
175	180						17560	17570	17580	17590	175100
180	185						18060	18070	18080	18090	180100
185	190						18560	18570	18580	18590	185100
190	195						19060	19070	19080	19090	190100
195	200						19560	19570	19580	19590	195100
200	205						20060	20070	20080	20090	200100
205	210						20560	20570	20580	20590	205100
215	220						21560	21570	21580	21590	215100
225	230						22560	22570	22580	22590	225100
230	235						23060	23070	23080	23090	230100
240	245						24060	24070	24080	24090	240100
250	255						25060	25070	25080	25090	250100
260	265						26060	26070	26080	26090	260100
270	275						27060	27070	27080	27090	270100
280	285						28060	28070	28080	28090	280100
290	295						29060	29070	29080	29090	290100
300	305						30060	30070	30080	30090	300100

# FYB090F 青铜翻边轴套规格及公差

## Bronze Flange Bushing Specification & Tolerance



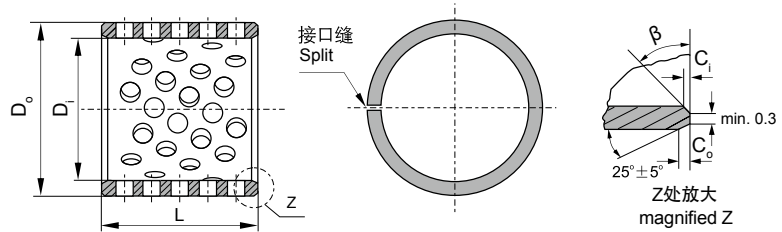
$S_3$	1.0	1.5	2.0	2.5
$r$	$1^{+0.5}$	$1 \pm 0.5$	$1.5 \pm 0.5$	$2 \pm 0.5$

单位Unit: mm

内径 $D_i$ $\phi d$	外径 $D_o$ $\phi D$	法兰外径 $D_{fl}$	长度 $L^{0}_{-0.40}$											
			15	20	25	30	35	40	50	60	70	80	90	
25	28	35	25150	25200	25250									
30	34	45		30200	30250	30300								
35	39	50		35200	35250	35300	35350							
40	44	55			40250	40300	40350	40400						
45	50	60				45300	45350	45400	45500					
50	55	65				50300	50350	50400	50500					
55	60	70				55300	55350	55400	55500					
60	65	75				60300	60350	60400	60500	60600				
65	70	80				65300	65350	65400	65500	65600				
70	75	85					70350	70400	70500	70600	70700			
75	80	90					75350	75400	75500	75600	75700			
80	85	100					80350	80400	80500	80600	80700	80800		
90	95	110						90500	90600	90700	90800	90900		
100	105	120						100500	100600	100700	100800	100900		
110	115	130						110500	110600	110700	110800	110900		
120	125	140						120500	120600	120700	120800	120900		
130	135	155							130600	130700	130800	130900		
140	145	165							140600	140700	140800	140900		
150	155	180							150600	150700	150800	150900		
160	165	190							160600	160700	160800	160900		
170	175	200							170600	170700	170800	170900		
180	185	215							180600	180700	180800	180900		
190	195	225							190600	190700	190800	190900		
200	205	235							200600	200700	200800	200900		
225	230	260							225600	225700	225800	225900		
250	255	290							250600	250700	250800	250900		
265	270	305							265600	265700	265800	265900		
285	290	325							285600	285700	285800	285900		
300	305	340							300600	300700	300800	300900		

# FYB092 青铜轴套规格及公差

## Bronze Sleeve Bushing Specification & Tolerance



内外倒角 ID and OD chamfers

$S_3$	$C_o$	$C_i$	$\beta$
0.75	$0.5 \pm 0.3$	$0.25 \pm 0.2$	$35^\circ \pm 5^\circ$
1.00	$0.6 \pm 0.3$	$0.30 \pm 0.2$	$35^\circ \pm 5^\circ$
1.50	$0.7 \pm 0.3$	$0.50 \pm 0.3$	$35^\circ \pm 5^\circ$

$S_3$	$C_o$	$C_i$	$\beta$
2.00	$1.2 \pm 0.4$	$0.50 \pm 0.3$	$35^\circ \pm 5^\circ$
2.50	$1.8 \pm 0.6$	$0.60 \pm 0.3$	$45^\circ \pm 5^\circ$

单位Unit: mm

内径 $D_i$ $\phi d$	外径 $D_o$ $\phi D$	长度 $L \begin{smallmatrix} 0 \\ -0.40 \end{smallmatrix}$													
		10	15	20	25	30	35	40	50	60	70	80	90	100	
10	12	1010	1015	1020											
12	14	1210	1215	1220											
14	16	1410	1415	1420	1425										
15	17	1510	1515	1520	1525										
16	18	1610	1615	1620	1625										
18	20	1810	1815	1820	1825										
20	23	2010	2015	2020	2025										
22	25	2210	2215	2220	2225	2230									
24	27		2415	2420	2425	2430									
25	28		2515	2520	2525	2530									
28	31		2815	2820	2825	2830									
30	34		3015	3020	3025	3030	3035	3040							
32	36		3215	3220	3225	3230	3235	3240							
35	39		3515	3520	3525	3530	3535	3540							
40	44			4020	4025	4030	4035	4040	4050						
45	50			4520	4525	4530	4535	4540	4550						
50	55			5020	5025	5030	5035	5040	5050	5060					
55	60			5520	5525	5530	5535	5540	5550	5560					
60	65				6025	6030	6035	6040	6050	6060	6070				
65	70					6530	6535	6540	6550	6560	6570				
70	75					7030	7035	7040	7050	7060	7070	7080			
75	80					7530	7535	7540	7550	7560	7570	7580			
80	85					8030	8035	8040	8050	8060	8070	8080			
85	90					8530	8535	8540	8550	8560	8570	8580	8590		
90	95					9030	9035	9040	9050	9060	9070	9080	9090		
95	100							9540	9550	9560	9570	9580	9590	95100	

# FYB092 青铜轴套规格及公差

## Bronze Sleeve Bushing Specification & Tolerance



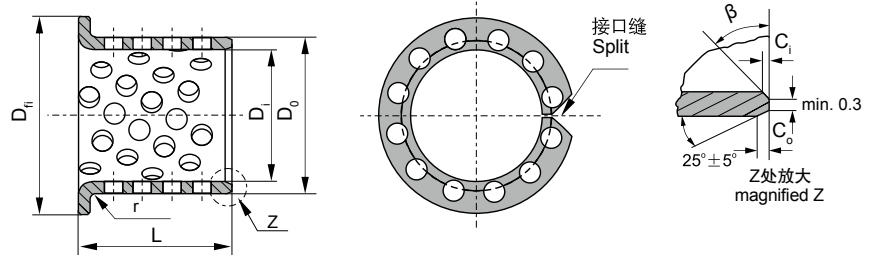
单位Unit: mm

内径 D <sub>i</sub> φd	外径 D <sub>o</sub> φD	长度 L <sup>0</sup> / <sub>-0.40</sub>									
		25	30	35	40	50	60	70	80	90	100
100	105					10050	10060	10070	10080	10090	100100
105	110					10550	10560	10570	10580	10590	105100
110	115					11050	11060	11070	11080	11090	110100
115	120					11550	11560	11570	11580	11590	115100
120	125						12060	12070	12080	12090	120100
125	130						12560	12570	12580	12590	125100
130	135						13060	13070	13080	13090	130100
135	140						13560	13570	13580	13590	135100
140	145						14060	14070	14080	14090	140100
145	150						14560	14570	14580	14590	145100
150	155						15060	15070	15080	15090	150100
155	160						15560	15570	15580	15590	155100
160	165						16060	16070	16080	16090	160100
165	170						16560	16570	16580	16590	165100
170	175						17060	17070	17080	17090	170100
175	180						17560	17570	17580	17590	175100
180	185						18060	18070	18080	18090	180100
185	190						18560	18570	18580	18590	185100
190	195						19060	19070	19080	19090	190100
195	200						19560	19570	19580	19590	195100
200	205						20060	20070	20080	20090	200100
205	210						20560	20570	20580	20590	205100
215	220						21560	21570	21580	21590	215100
225	230						22560	22570	22580	22590	225100
230	235						23060	23070	23080	23090	230100
240	245						24060	24070	24080	24090	240100
250	255						25060	25070	25080	25090	250100
260	265						26060	26070	26080	26090	260100
270	275						27060	27070	27080	27090	270100
280	285						28060	28070	28080	28090	280100
290	295						29060	29070	29080	29090	290100
300	305						30060	30070	30080	30090	300100



# FYB092F 青铜翻边轴套规格及公差

## Bronze Flange Bushing Specification & Tolerance



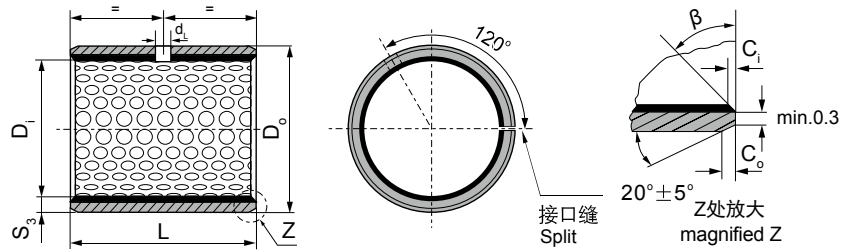
$S_3$	1.0	1.5	2.0	2.5
$r$	$1^{-0.5}$	$1 \pm 0.5$	$1.5 \pm 0.5$	$2 \pm 0.5$

单位Unit: mm

内径 $D_i$ $\phi d$	外径 $D_o$ $\phi D$	法兰外径 $D_{fi}$	长度 $L \begin{smallmatrix} 0 \\ -0.40 \end{smallmatrix}$											
			15	20	25	30	35	40	50	60	70	80	90	
25	28	35	25150	25200	25250									
30	34	45		30200	30250	30300								
35	39	50		35200	35250	35300	35350							
40	44	55			40250	40300	40350	40400						
45	50	60				45300	45350	45400	45500					
50	55	65				50300	50350	50400	50500					
55	60	70				55300	55350	55400	55500					
60	65	75				60300	60350	60400	60500	60600				
65	70	80				65300	65350	65400	65500	65600				
70	75	85					70350	70400	70500	70600	70700			
75	80	90					75350	75400	75500	75600	75700			
80	85	95					80350	80400	80500	80600	80700	80800		
90	95	110							90500	90600	90700	90800	90900	
100	105	120							100500	100600	100700	100800	100900	
110	115	130							110500	110600	110700	110800	110900	
120	125	140							120500	120600	120700	120800	120900	
130	135	165								130600	130700	130800	130900	
140	145	165								140600	140700	140800	140900	
150	155	180								150600	150700	150800	150900	
160	165	190								160600	160700	160800	160900	
170	175	200								170600	170700	170800	170900	
180	185	215								180600	180700	180800	180900	
190	195	225								190600	190700	190800	190900	
200	205	235								200600	200700	200800	200900	
225	230	260								225600	225700	225800	225900	
250	255	290								250600	250700	250800	250900	
265	270	305								265600	265700	265800	265900	
285	290	325								285600	285700	285800	285900	
300	305	340								300600	300700	300800	300900	

# FYB800 双金属轴承规格及公差

## Bimetal Sleeve Bearing Specification & Tolerance



内外倒角 ID and OD chamfers

S <sub>3</sub>	C <sub>o</sub>	C <sub>i</sub>	β
0.75	0.5±0.3	0.25±0.2	35°±5°
1.00	0.6±0.3	0.30±0.2	35°±5°
1.50	0.7±0.3	0.50±0.3	35°±5°

S <sub>3</sub>	C <sub>o</sub>	C <sub>i</sub>	β
2.00	1.2±0.4	0.50±0.3	35°±5°
2.50	1.8±0.6	0.60±0.3	45°±5°

单位unit:mm

内径 D <sub>i</sub> φd	外径 D <sub>o</sub> φD	轴径(h8) Shaft D <sub>s</sub>	座孔(H7) Housing D <sub>H</sub>	压装后 内孔公差 Arter fixed D <sub>ia</sub>	配合间隙 Clearance C <sub>o</sub>	壁厚 Wall thickness S <sub>3</sub>	油孔 Oil hole d <sub>L</sub>	长度 L $\begin{smallmatrix} 0 \\ -0.40 \end{smallmatrix}$							
								10	15	20	25	30	40	50	
10	12	10 -0.022	12 +0.018		0.170 0.010			1010	1015	1020					
12	14	12 -0.027	14 +0.018					1210	1215	1220					
14	16	14 -0.027	16 +0.018	+0.148 +0.010	0.175 0.010	0.995 0.935		1410	1415	1420					
15	17	15 -0.027	17 +0.018				4	1510	1515	1520					
16	18	16 -0.027	18 +0.018					1610	1615	1620					
18	20	18 -0.027	20 +0.021	+0.151 +0.010	0.178 0.010			1810	1815	1820	1825				
20	23	20 -0.033	23 +0.021					2010	2015	2020	2025				
22	25	22 -0.033	25 +0.021					2210	2215	2220	2225				
24	27	24 -0.033	27 +0.021	+0.161 +0.020	0.194 0.020	1.490 1.430		2410	2415	2420	2425	2430			
25	28	25 -0.033	28 +0.021						2515	2520	2525	2530			
26	30	26 -0.033	30 +0.021	+0.181 +0.040	0.214 0.040				2615	2620	2625	2630			
28	32	28 -0.033	32 +0.025				6		2815	2820	2825	2830	2840		
30	34	30 -0.033	34 +0.025		0.218 0.040				3015	3020	3025	3030	3040		
32	36	32 -0.039	36 +0.025			1.980 1.920			3215	3220	3225	3230	3240		
35	39	35 -0.039	39 +0.025	+0.185 +0.040						3520	3525	3530	3540	3550	
38	42	38 -0.039	42 +0.025		0.224 0.040					3820	3825	3830	3840	3850	
40	44	40 -0.039	44 +0.025				8			4020	4025	4030	4040	4050	

# FYB800 双金属轴承规格及公差

## Bimetal Sleeve Bushing Specification & Tolerance

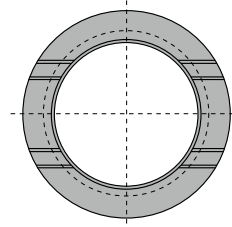
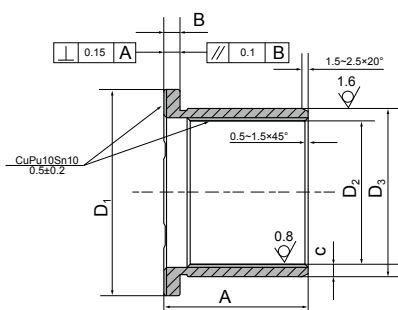


单位unit:mm

内径 D <sub>i</sub> φd	外径 D <sub>o</sub> φD	轴径(h8) Shaft D <sub>s</sub>	座孔(H7) Housing D <sub>H</sub>	压装后 内孔公差 Arter fixed D <sub>i,a</sub>	配合间隙 Clearance C <sub>D</sub>	壁厚 Wall thickness S <sub>3</sub>	油孔 Oil hole d <sub>L</sub>	长度 L $\begin{matrix} 0 \\ -0.40 \end{matrix}$							
								25	30	40	50	60	80	90	100
45	50	45 -0.039	50 +0.025	+0.225 +0.080	0.264 0.080			4525	4530	4540	4550				
50	55	50 -0.039	55 +0.030		0.269 0.080				5030	5040	5050	5060			
55	60	55 -0.046	60 +0.030						5530	5540	5550	5560			
60	65	60 -0.046	65 +0.030				8		6030	6040	6050	6060			
65	70	65 -0.046	70 +0.030	+0.230 +0.080	0.276 0.080				6530	6540	6550	6560			
70	75	70 -0.046	75 +0.030						7030	7040	7050	7060	7080		
75	80	75 -0.046	80 +0.030						7530	7540	7550	7560	7580		
80	85	80 -0.046	85 +0.035		0.281 0.080				8030	8040	8050	8060	8080	8090	
85	90	85 -0.054	90 +0.035						8530	8540	8550	8560	8580	8590	85100
90	95	90 -0.054	95 +0.035							9040	9050	9060	9080	9090	90100
95	100	95 -0.054	100 +0.035			2.460 2.400					9550	9560	9580	9590	95100
100	105	100 -0.054	105 +0.035	+0.235 +0.080							10050	10060	10080	10090	100100
105	110	105 -0.054	110 +0.035		0.289 0.080						10550	10560	10580	10590	105100
110	115	110 -0.054	115 +0.035				9.5				11050	11060	11080	11090	110100
115	120	115 -0.054	120 +0.035								11550	11560	11580	11590	115100
120	125	120 -0.054	125 +0.040								12050	12060	12080	12090	120100
125	130	125 -0.063	130 +0.040									12560	12580	12590	125100
130	135	130 -0.063	135 +0.040									13060	13080	13090	130100
135	140	135 -0.063	140 +0.040	+0.240 +0.080	0.303 0.080							13560	13580	13590	135100
140	145	140 -0.063	145 +0.040									14060	14080	14090	140100
150	155	150 -0.063	155 +0.040									15060	15080	15090	150100

# FYB800F 双金属翻边轴承规格及公差

## Bimetal Flange Bushing Specification & Tolerance



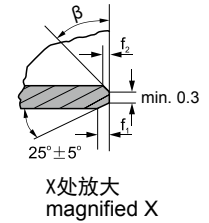
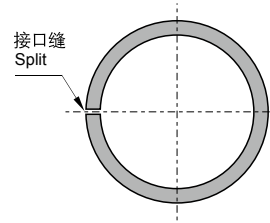
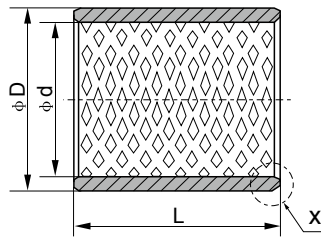
单位unit:mm

D <sub>1</sub>	B	D <sub>3</sub>	D <sub>2</sub>	A	C
42	3.5	37	30	30	3.5
43	2	34	30	28	2
44	3.5	39	32	35	3.5
47	3.5	39	32	50	3.5
48	2	39	35	37	2
52	3	41	35	35	3
55	3.5	42	35	35	3.5
55	3.5	45	38	35	3.5
55	3.5	45	38	40	3.5
60	3	41	35	42	3
60	3	46	40	62	3
63	3.5	47	40	40	3.5
65	3.5	52	45	40	3.5
68	3.5	54	47	35	3.5
70	3.5	54	47	40	3.5
70	3.5	57	50	48	3.5
72	3.5	57	50	45	3.5
72	3.5	57	50	50	3.5
75	3.5	57	50	50	3.5
77	3	60	54	55	3
83	3.5	66	59	53	3.5
85	3.5	65	58	60	3.5
87	3.5	67	60	53	3.5
87	3.5	67	60	60	3.5

D <sub>1</sub>	B	D <sub>3</sub>	D <sub>2</sub>	A	C
87	3.5	67	60	65	3.5
87	4	68	60	60	4
94	3.5	72	65	60	3.5
87	3.5	72	65	65	3.5
87.5	1.95	69.12	65.22	64.5	2
88	3.5	67	60	60	3.5
88	3.5	72	65	65	3.5
92	3.5	77	70	67	3.5
93	3.5	75	68	60	3.5
94	3.5	77	70	70	3.5
95	3.5	77	70	65	3.5
95	4	78	70	70	4
97	3.48	77.14	70.18	62	3.5
97	3.5	82	75	74	3.5
100	5	85	75	70	5
103	3.525	70.8	63.75	73	3.5
105	3.5	82	75	75	3.5
105	3.5	87	80	70	3.5
107	4	83	75	74	4
115	5	100	90	75	5
128	3.8	92.6	85	103	4
108	3.5	72	65	75	3.5
108	3.5	77	70	98	3.5
108	5	80	70	90	5

# FYB80G 固体润滑轴承规格及公差

## Solid-lubricant Bushing Specification & Tolerance

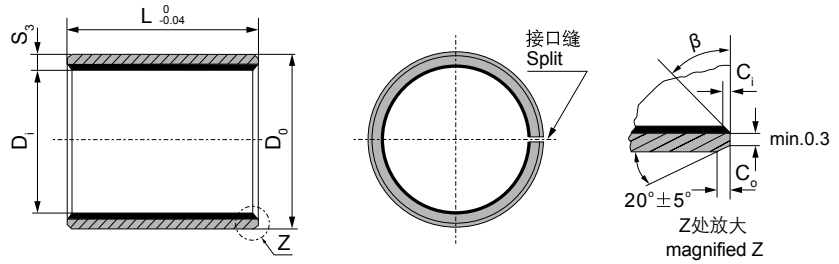


单位 Unit: mm

d	D	f <sub>1</sub>	f <sub>2</sub>	0 <sub>-0.40</sub>																							
				10	15	20	25	30	35	40	50	60	70	80	90	100											
10	12	0.3	0.5	1010	1015	1020																					
12	14			1210	1215	1220																					
14	16			1410	1415	1420	1425																				
15	17			1510	1515	1520	1525																				
16	18			1610	1615	1620	1625																				
18	20			1810	1815	1820	1825																				
20	23	2010	2015	2020	2025																						
22	25	0.8	0.4	2210	2215	2220	2225	2230																			
24	27			2415	2420	2425	2430																				
25	28			2515	2520	2525	2530																				
28	32			2815	2820	2825	2830																				
30	34	1.0	0.6	3015	3020	3025	3030	3035	3040																		
32	36			3215	3220	3225	3230	3235	3240																		
35	39			3515	3520	3525	3530	3535	3540																		
40	44					4020	4025	4030	4035	4040	4050																
45	50				4520	4525	4530	4535	4540	4550																	
50	55	1.2			5020	5025	5030	5035	5040	5050	5060																
55	60				5520	5525	5530	5535	5540	5550	5560																
60	65						6025	6030	6035	6040	6050	6060	6070														
65	70								6530	6535	6540	6550	6560	6570													
70	75									7030	7035	7040	7050	7060	7070	7080											
75	80										7530	7535	7540	7550	7560	7570	7580										
80	85									8030	8035	8040	8050	8060	8070	8080											
85	90										8540	8550	8560	8570	8580	8590											
90	95											9040	9050	9060	9070	9080	9090										
95	100												9550	9560	9570	9580	9590	95100									
100	105	0.8											10050	10060	10070	10080	10090	100100									
105	110														10550	10560	10570	10580	10590	105100							
110	115															11050	11060	11070	11080	11090	110100						
115	120																11550	11560	11570	11580	11590	115100					
120	125	1.4														12060	12070	12080	12090	120100							
125	130																	12560	12570	12580	12590	125100					
130	135																		13060	13070	13080	13090	130100				
135	140																			13560	13570	13580	13590	135100			
140	145																				14060	14070	14080	14090	140100		
145	150																					14560	14570	14580	14590	145100	
150	155																				15060	15070	15080	15090	150100		
155	160																					15560	15570	15580	15590	155100	
160	165																						16060	16070	16080	16090	160100

# FYB010 轴套规格及公差

## Sleeve Bushing Specification & Tolerance



内外倒角 ID and OD chamfers

$S_3$	$C_o$	$C_i$	$\beta$
0.75	$0.5 \pm 0.3$	$0.25 \pm 0.2$	$30^\circ \pm 5^\circ$
1.00	$0.6 \pm 0.3$	$0.30 \pm 0.2$	$30^\circ \pm 5^\circ$
1.50	$0.7 \pm 0.3$	$0.50 \pm 0.3$	$30^\circ \pm 5^\circ$

$S_3$	$C_o$	$C_i$	$\beta$
2.00	$1.2 \pm 0.4$	$0.50 \pm 0.3$	$30^\circ \pm 5^\circ$
2.50	$1.8 \pm 0.6$	$0.60 \pm 0.3$	$45^\circ \pm 5^\circ$

单位Unit: mm

轴径(f7) Shaft $D_s$	座孔(H7) Housing $D_H$	(OD) 外径公差 Tolerance $D_o$	(ID)压装后 内孔公差 After fixed $D_{i,a}$	配合间隙 Clearance $D_o$	壁厚 Wall thick- ness $S_3$	长度 $L$ $\begin{matrix} 0 \\ -0.40 \end{matrix}$ ( $d \leq \Phi 28$ L-0.30 $d > \Phi 30$ L-0.40)												
						6	8	10	12	15	20	25	30	40	50			
6 $\begin{matrix} -0.010 \\ -0.022 \end{matrix}$	8 $+0.015$	8 $\begin{matrix} +0.055 \\ +0.025 \end{matrix}$	6.055 5.990	0.077 0.000		0606	0608	0610										
8 $\begin{matrix} -0.013 \\ -0.028 \end{matrix}$	10 $+0.015$	10 $\begin{matrix} +0.055 \\ +0.025 \end{matrix}$	8.055 7.990	0.083 0.003		0806	0808	0810	0812	0815								
10 $\begin{matrix} -0.013 \\ -0.028 \end{matrix}$	12 $+0.018$	12 $\begin{matrix} +0.065 \\ +0.030 \end{matrix}$	10.058 9.990	0.086 0.003		1006	1008	1010	1012	1015	1020							
12 $\begin{matrix} -0.016 \\ -0.034 \end{matrix}$	14 $+0.018$	14 $\begin{matrix} +0.065 \\ +0.030 \end{matrix}$	12.058 11.990			1206	1208	1210	1212	1215	1220	1225						
13 $\begin{matrix} -0.016 \\ -0.034 \end{matrix}$	15 $+0.018$	15 $\begin{matrix} +0.065 \\ +0.030 \end{matrix}$	13.058 12.990		1.005 0.980			1310	1312	1315	1320	1325						
14 $\begin{matrix} -0.016 \\ -0.034 \end{matrix}$	16 $+0.018$	16 $\begin{matrix} +0.065 \\ +0.030 \end{matrix}$	14.058 13.990	0.092 0.006				1410	1412	1415	1420	1425						
15 $\begin{matrix} -0.016 \\ -0.034 \end{matrix}$	17 $+0.018$	17 $\begin{matrix} +0.065 \\ +0.030 \end{matrix}$	15.058 14.990					1510	1512	1515	1520	1525						
16 $\begin{matrix} -0.016 \\ -0.034 \end{matrix}$	18 $+0.018$	18 $\begin{matrix} +0.065 \\ +0.030 \end{matrix}$	16.058 15.990					1610	1612	1615	1620	1625						
17 $\begin{matrix} -0.016 \\ -0.034 \end{matrix}$	19 $+0.021$	19 $\begin{matrix} +0.075 \\ +0.035 \end{matrix}$	17.061 16.990	0.095 0.006				1710	1712	1715	1720	1725						
18 $\begin{matrix} -0.016 \\ -0.034 \end{matrix}$	20 $+0.021$	20 $\begin{matrix} +0.075 \\ +0.035 \end{matrix}$	18.061 17.990					1810	1812	1815	1820	1825						
20 $\begin{matrix} -0.020 \\ -0.041 \end{matrix}$	23 $+0.021$	23 $\begin{matrix} +0.075 \\ +0.035 \end{matrix}$	20.071 19.990					2010	2012	2015	2020	2025	2030					
22 $\begin{matrix} -0.020 \\ -0.041 \end{matrix}$	25 $+0.021$	25 $\begin{matrix} +0.075 \\ +0.035 \end{matrix}$	22.071 21.990	0.112 0.010	1.505 1.475			2210	2212	2215	2220	2225	2230					
24 $\begin{matrix} -0.020 \\ -0.041 \end{matrix}$	27 $+0.021$	27 $\begin{matrix} +0.075 \\ +0.035 \end{matrix}$	24.071 23.990					2410	2412	2415	2420	2425	2430					
25 $\begin{matrix} -0.020 \\ -0.041 \end{matrix}$	28 $+0.021$	28 $\begin{matrix} +0.075 \\ +0.035 \end{matrix}$	25.071 24.990					2510	2512	2515	2520	2525	2530	2540	2550			
28 $\begin{matrix} -0.020 \\ -0.041 \end{matrix}$	32 $+0.025$	32 $\begin{matrix} +0.085 \\ +0.045 \end{matrix}$	28.085 27.990	0.126 0.010				2812	2815	2820	2825	2830	2840	2850				
30 $\begin{matrix} -0.020 \\ -0.041 \end{matrix}$	34 $+0.025$	34 $\begin{matrix} +0.085 \\ +0.045 \end{matrix}$	30.085 29.990					3012	3015	3020	3025	3030	3040	3050				
32 $\begin{matrix} -0.025 \\ -0.050 \end{matrix}$	36 $+0.025$	36 $\begin{matrix} +0.085 \\ +0.045 \end{matrix}$	32.085 31.990		2.005 1.970			3212	3215	3220	3225	3230	3240	3250				
35 $\begin{matrix} -0.025 \\ -0.050 \end{matrix}$	39 $+0.025$	39 $\begin{matrix} +0.085 \\ +0.045 \end{matrix}$	35.085 34.990	0.135 0.015				3512	3515	3520	3525	3530	3540	3550				
38 $\begin{matrix} -0.025 \\ -0.050 \end{matrix}$	42 $+0.025$	42 $\begin{matrix} +0.085 \\ +0.045 \end{matrix}$	38.085 37.990					3812	3815	3820	3825	3830	3840	3850				
40 $\begin{matrix} -0.025 \\ -0.050 \end{matrix}$	44 $+0.025$	44 $\begin{matrix} +0.085 \\ +0.045 \end{matrix}$	40.085 39.990					4012	4015	4020	4025	4030	4040	4050				

# FYB010 轴套规格及公差

## Sleeve Bushing Specification & Tolerance

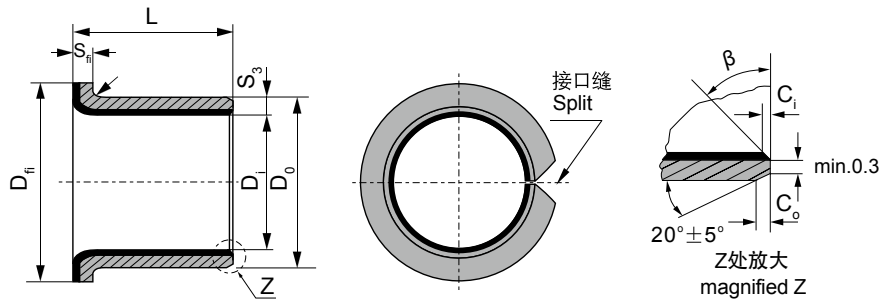


单位Unit: mm

轴径(f7) Shaft D <sub>s</sub>	座孔(H7) Housing D <sub>H</sub>	(OD) 外径公差 Tolerance D <sub>O</sub>	(ID)压装后 内孔公差 After fixed D <sub>1a</sub>	配合间隙 Clearance D <sub>O</sub>	壁厚 Wall thick- ness S <sub>3</sub>	长度 L <sup>0</sup> -0.40									
						20	25	30	40	50	60	70	80	100	115
45 -0.050 -0.025	50 +0.025	50 +0.085 +0.045	45.105 44.990	0.155 0.015		4520	4525	4530	4540	4550					
50 -0.050 -0.025	55 +0.030	55 +0.100 +0.055	50.110 49.990	0.160 0.015		5020	5025	5030	5040	5050	5060				
55 -0.060 -0.030	60 +0.030	60 +0.100 +0.055	55.110 54.990					5530	5540	5550	5560				
60 -0.060 -0.030	65 +0.030	65 +0.100 +0.055	60.110 59.990		2.505 2.460				6030	6040	6050	6060	6070		
65 -0.060 -0.030	70 +0.030	70 +0.100 +0.055	65.110 64.990	0.170 0.020					6530	6540	6550	6560	6570		
70 -0.060 -0.030	75 +0.030	75 +0.100 +0.055	70.110 69.990						7030	7040	7050	7060	7070	7080	
75 -0.060 -0.030	80 +0.030	80 +0.100 +0.055	75.110 74.990						7530	7540	7550	7560	7570	7580	
80 -0.045	85 +0.035	85 +0.120 +0.070	80.155 80.020	0.201 0.020						8040	8050	8060	8070	8080	80100
85 -0.054	90 +0.035	90 +0.120 +0.070	85.155 85.020							8540	8550	8560	8570	8580	85100
90 -0.054	95 +0.035	95 +0.120 +0.070	90.155 90.020							9040	9050	9060	9070	9080	90100
95 -0.054	100 +0.035	100 +0.120 +0.070	95.155 95.020	0.209 0.020	2.490 2.440					9550	9560	9570	9580	95100	
100 -0.054	105 +0.035	105 +0.120 +0.070	100.155 100.020								10050	10060	10070	10080	100100 100115
105 -0.054	110 +0.035	110 +0.120 +0.070	105.155 105.020									10560	10570	10580	105100 105115
110 -0.054	115 +0.035	115 +0.120 +0.070	110.115 110.020									11060	11070	11080	110100 110115
120 -0.054	125 +0.040	125 +0.170 +0.100	120.210 120.070	0.264 0.070								12060	12070	12080	120100 120115
125 -0.063	130 +0.040	130 +0.170 +0.100	125.210 125.070									12560	12570	12580	125100 125115
130 -0.063	135 +0.040	135 +0.170 +0.100	130.210 130.070		2.465 2.415							13060	13070	13080	130100 130115
140 -0.063	145 +0.040	145 +0.170 +0.100	140.210 140.070	0.273 0.070								14060	14070	14080	140100 140115
150 -0.063	155 +0.040	155 +0.170 +0.100	150.210 150.070									15060	15070	15080	150100 150115
160 -0.063	165 +0.040	165 +0.170 +0.100	160.210 160.070									16060	16070	16080	160100 160115
180 -0.063	185 +0.046	185 +0.210 +0.130	180.216 180.070	0.279 0.070								18060	18070	18080	180100
190 -0.072	195 +0.046	195 +0.210 +0.130	190.216 190.070		2.465 2.415							19060	19070	19080	190100
200 -0.072	205 +0.046	205 +0.210 +0.130	200.016 200.070	0.288 0.070								20060	20070	20080	200100
220 -0.072	225 +0.046	225 +0.210 +0.130	220.216 220.070									22060	22070	22080	220100
250 -0.072	255 +0.052	255 +0.260 +0.170	250.222 250.070	0.294 0.070										25080	250100
260 -0.081	265 +0.052	265 +0.260 +0.170	260.222 260.070		2.465 2.415									26080	260100
280 -0.081	285 +0.052	285 +0.260 +0.170	280.222 280.070	0.303 0.070										28080	280100
300 -0.081	305 +0.052	305 +0.260 +0.170	300.222 300.070											30080	300100

# FYB010F 翻边轴套规格及公差

## Flange Bushing Specification & Tolerance



$S_3$	1.0	1.5	2.0	2.5
$r$	$1^{-0.5}$	$1 \pm 0.5$	$1.5 \pm 0.5$	$2 \pm 0.5$

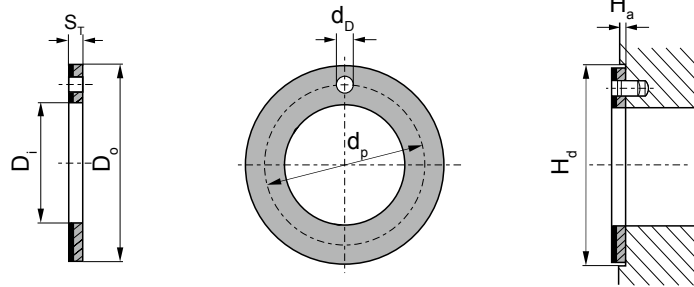
单位Unit: mm

轴径(f7) Shaft $D_s$	座孔(H7) Housing $D_H$	(OD) 外径公差 Tolerance $D_o$	(ID)压装后 内孔公差 After fixed $D_{ia}$	配合间隙 Clearance $C_o$	Designation 型号规格	Wall thickness 壁厚 $S_3$	尺寸 Dimension				
							$D_i$	$D_o$	$D_H \pm 0.5$	$L \pm 0.25$	$S_H - 0.2$
6 -0.013 -0.028	8 +0.015	8 +0.055 +0.025	6.055 5.990	0.077 0.000	FYB-10F06040		6	8	12	4	
					FYB-10F06070					7	
8 -0.013 -0.028	10 +0.015	10 +0.055 +0.025	8.055 7.990	0.083 0.003	FYB-10F08055		8	10	15	5.5	
					FYB-10F08075					7.5	
10 -0.016 -0.034	12 +0.018	12 +0.055 +0.025	10.058 9.990	0.086 0.003	FYB-10F10070		10	12	18	7	
					FYB-10F10090					9	
					FYB-10F10120					12	
					FYB-10F12070					7	
12 -0.016 -0.034	14 +0.018	14 +0.065 +0.030	12.058 11.990	0.092 0.006	FYB-10F12090		12	14	20	9	1
					FYB-10F12120					12	
					FYB-10F14120					12	
14 -0.016 -0.034	16 +0.018	16 +0.065 +0.030	14.058 13.990	0.092 0.006	FYB-10F14170		14	16	22	12	
					FYB-10F15090					17	
					FYB-10F15120					17	
15 -0.016 -0.034	17 +0.018	17 +0.065 +0.030	15.058 14.990	0.092 0.006	FYB-10F15170		15	17	23	9	
					FYB-10F16120					12	
16 -0.016 -0.034	18 +0.018	18 +0.065 +0.030	16.058 15.990	0.092 0.006	FYB-10F16170		16	18	24	17	
					FYB-10F18120					12	
18 -0.016 -0.034	20 +0.021	20 +0.075 +0.035	18.061 17.990	0.095 0.006	FYB-10F18170		18	20	26	17	
					FYB-10F18200					20	
					FYB-10F20115					11.5	
20 -0.020 -0.041	23 +0.021	23 +0.075 +0.035	20.071 19.990	0.112 0.010	FYB-10F20165		20	23	30	16.5	
					FYB-10F20215					21.5	
					FYB-10F22150					15	
22 -0.020 -0.041	25 +0.021	25 +0.075 +0.035	22.071 21.990	0.112 0.010	FYB-10F22200		22	25	32	20	1.5
					FYB-10F25115					11.5	
25 -0.020 -0.041	28 +0.021	28 +0.075 +0.035	25.071 24.990	0.112 0.010	FYB-10F25165		25	28	35	16.5	
					FYB-10F25215					21.5	
					FYB-10F30160					16	
30 -0.025 -0.050	34 +0.025	34 +0.075 +0.035	30.085 29.990	0.126 0.010	FYB-10F30260		30	34	42	26	
					FYB-10F35160					16	
35 -0.025 -0.050	39 +0.025	39 +0.085 +0.045	35.085 34.990	0.135 0.015	FYB-10F35260		35	39	47	26	2
					FYB-10F40260					26	
40 -0.025 -0.050	44 +0.025	44 +0.085 +0.045	40.085 39.990	0.135 0.015	FYB-10F40400		40	44	53	40	



# FYB01WC 垫片规格及公差

## Thrust Washer Specification & Tolerance

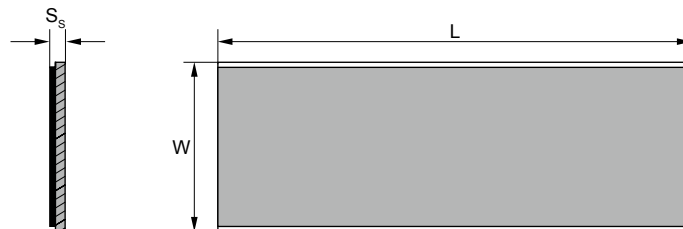


单位Unit: mm

轴径 Shaft $D_s$	型号规格 Standard No.	垫片尺寸 Washer size				安装尺寸 Assemble size		$H_d+0.12$
		$D_i+0.25$	$D_o-0.25$	$S_T-0.05$	$d_p\pm 0.125$	$d_D \begin{matrix} +0.4 \\ +0.1 \end{matrix}$	$H_a\pm 0.2$	
8	FYB01WC 10	10	20		15	1.5		20
10	FYB01WC 12	12	24		18			24
12	FYB01WC 14	14	26		20			26
14	FYB01WC 16	16	30		23	2		30
16	FYB01WC 18	18	32		25			32
18	FYB01WC 20	20	36		28			36
20	FYB01WC 22	22	38	1.5	30	3	1	38
22	FYB01WC 24	24	42		33			42
24	FYB01WC 26	26	44		35			44
26	FYB01WC 28	28	48		38			48
30	FYB01WC 32	32	54		43			54
36	FYB01WC 38	38	62		50			62
40	FYB01WC 42	42	66		54	4		66
46	FYB01WC 48	48	74		61			74
50	FYB01WC 52	52	78	2	65		1.5	78
60	FYB01WC 62	62	90		76			90

# FYB01SP 板材规格及公差

## Strip Specification & Tolerance



单位Unit: mm

型号规格 Standard No.	长度 $L\pm 1$	宽度 $W\pm 1$	厚壁 Wall thickness $S_s-0.05$
FYB01SP	500	150	1.0
FYB01SP	500	150	1.5
FYB01SP	500	150	2.0
FYB01SP	500	150	2.5



# FYB020 轴承规格及公差

## Sleeve Bushing Specification & Tolerance

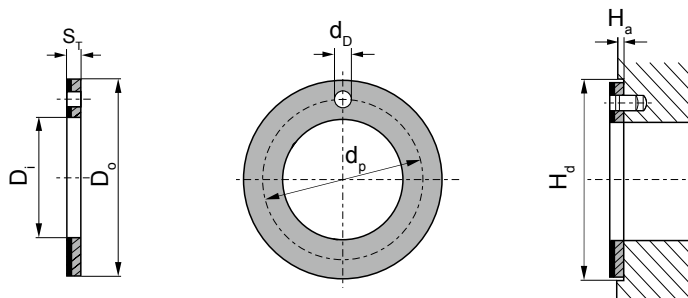
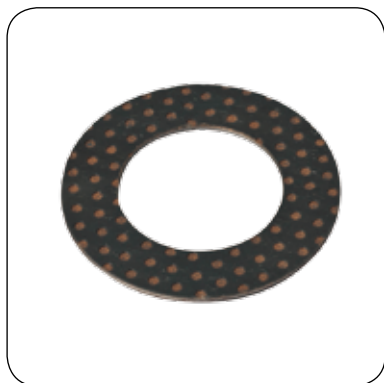


单位Unit: mm

轴径 Shaft D <sub>s</sub> h8	座孔 Housing H7 D <sub>H</sub>	(OD) 外径公差 Tolerance D <sub>O</sub>	(ID)压装后 内孔公差 After fixed D <sub>ia</sub>	配合间隙 Clearance D <sub>D</sub>	壁厚 Wall thick- ness S <sub>3</sub>	油孔 Oil hole d <sub>L</sub>	长度 L <sup>0</sup> <sub>-0.40</sub>									
							40	50	60	80	90	95	100	110	120	
65 -0.046	70 +0.030	70 +0.100 +0.055	65.200 65.080				6540	6550	6560							
70 -0.046	75 +0.030	75 +0.100 +0.055	70.200 70.080	0.246 0.080	2.460 2.415	8	7040	7050	7060	7080						
75 -0.046	80 +0.030	80 +0.100 +0.055	75.200 75.080				7540	7550	7560	7580						
80 -0.046	85 +0.035	85 +0.120 +0.070	80.265 80.100	0.313 0.100			8040	8050	8060	8080						
85 -0.054	90 +0.035	90 +0.120 +0.070	85.265 85.100				8540	8550	8560	8580						
90 -0.054	95 +0.035	95 +0.120 +0.070	90.265 90.100				9040	9050	9060	9080	9090					
100 -0.054	105 +0.035	105 +0.120 +0.070	100.265 100.100	0.321 0.100				10050	10060	10080	10090	10095				
105 -0.054	110 +0.035	110 +0.120 +0.070	105.265 105.100					10550	10560	10580	10590	10595	105100	105110		
110 -0.054	115 +0.035	115 +0.120 +0.070	110.265 110.110			9.5		11050	11060	11080	11090	11095	110100	110110		
120 -0.054	125 +0.040	125 +0.170 +0.100	120.270 120.110					12050	12060	12080	12090	12095	120100	120110		
125 -0.063	130 +0.040	130 +0.170 +0.100	125.270 125.110					12550	12560	12580	12590	12595	125100	125110		
130 -0.063	135 +0.040	135 +0.170 +0.100	130.270 130.110					13050	13060	13080	13090	13095	130100	130110		
140 -0.063	145 +0.040	145 +0.170 +0.100	140.270 140.110	0.324 0.100				14050	14060	14080	14090	14095	140100	140110		
150 -0.063	155 +0.040	155 +0.170 +0.100	150.270 150.110		2.450 2.385			15050	15060	15080	15090	15095	150100	150110		
160 -0.063	165 +0.040	165 +0.170 +0.100	160.270 160.110					16050	16060	16080	16090	16095	160100	160110		
170 -0.063	175 +0.040	175 +0.170 +0.100	170.270 170.110					17050	17060	17080	17090	17095	170100	170110		
180 -0.063	185 +0.046	185 +0.210 +0.130	180.276 180.110			9.5		18050	18060	18080	18090	18095	180100	180110		
190 -0.072	195 +0.046	195 +0.210 +0.130	190.276 190.110					19050	19060	19080	19090	19095	190100	190110	190120	
200 -0.072	205 +0.046	205 +0.210 +0.130	200.276 200.110	0.339 0.110				20050	20060	20080	20090	20095	200100	200110	200120	
220 -0.072	225 +0.046	225 +0.210 +0.130	220.276 220.110					22050	22060	22080	22090	22095	220100	220110	220120	
240 -0.072	245 +0.046	245 +0.210 +0.130	240.276 240.110					24050	24060	24080	24090	24095	240100	240110	240120	
250 -0.072	255 +0.052	255 +0.260 +0.170	250.282 250.110					25050	25060	25080	25090	25095	250100	250110	250120	
260 -0.081	265 +0.052	265 +0.260 +0.170	260.282 260.110	0.354 0.110		9.5		26050	26060	26080	26090	26095	260100	260110	260120	
280 -0.081	285 +0.052	285 +0.260 +0.170	280.282 280.110					28050	28060	28080	28090	28095	280100	280110	280120	
300 -0.081	305 +0.052	305 +0.260 +0.170	300.282 300.110					30050	30060	30080	30090	30095	300100	300110	300120	

# FYB02WC 垫片规格及公差

## Thrust Washer Specification & Tolerance

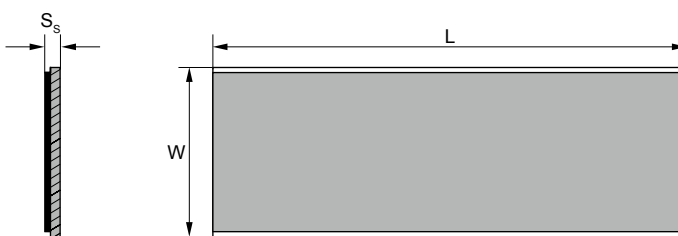
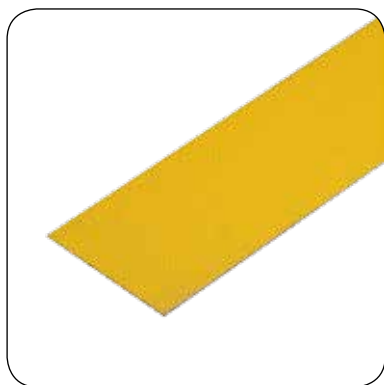


单位Unit: mm

轴径 Shaft $D_s$	型号规格 Standard No.	垫片尺寸 Washer size				安装尺寸 Assemble size		$H_a+0.12$
		$D_i+0.25$	$D_o-0.25$	$S_T-0.05$	$d_p\pm 0.125$	$d_o \begin{matrix} +0.4 \\ +0.1 \end{matrix}$	$H_a\pm 0.2$	
8	FYB02WC 10	10	20		15	1.5		20
10	FYB02WC 12	12	24		18			24
12	FYB02WC 14	14	26		20			26
14	FYB02WC 16	16	30		23	2		30
16	FYB02WC 18	18	32		25			32
18	FYB02WC 20	20	36		28			36
20	FYB02WC 22	22	38	1.5	30	3	1	38
22	FYB02WC 24	24	42		33			42
24	FYB02WC 26	26	44		35			44
26	FYB02WC 28	28	48		38			48
30	FYB02WC 32	32	54		43			54
36	FYB02WC 38	38	62		50			62
40	FYB02WC 42	42	66		54	4		66
46	FYB02WC 48	48	74		61			74
50	FYB02WC 52	52	78	2	65		1.5	78
60	FYB02WC 62	62	90		76			90

# FYB02SP 板材规格及公差

## Strip Specification & Tolerance



单位Unit: mm

型号规格 Standard No.	长度 $L\pm 1$	宽度 $W\pm 1$	厚壁 Wall thickness $S_s-0.05$
FYB02SP	500	150	1.0
FYB02SP	500	150	1.5
FYB02SP	500	150	2.0
FYB02SP	500	150	2.5



### **嘉善飞瑜滑动轴承厂**

地址: 浙江省嘉善县干窑镇黎明村曹家溇70号[干窑工业城]

邮编: 314115

电话: 0573-84518271

传真: 0573-84518261

网站: <http://www.jsfyzc.com>

邮件: [jsfyzc@163.com](mailto:jsfyzc@163.com)

### **JIASHAN FEIYU SLIDING BEARING FACTORY**

Add: Ganyao Industrial City at NO.70

Caojialou in Liming Village, Ganyao Town,

Jiashan County, Zhejiang, China

Code: 314115

Tel: 0573-84518271

Fax: 0573-84518261

Website: <http://www.jsfyzc.com>

E-mail: [jsfyzc@163.com](mailto:jsfyzc@163.com)